

Moritzberg



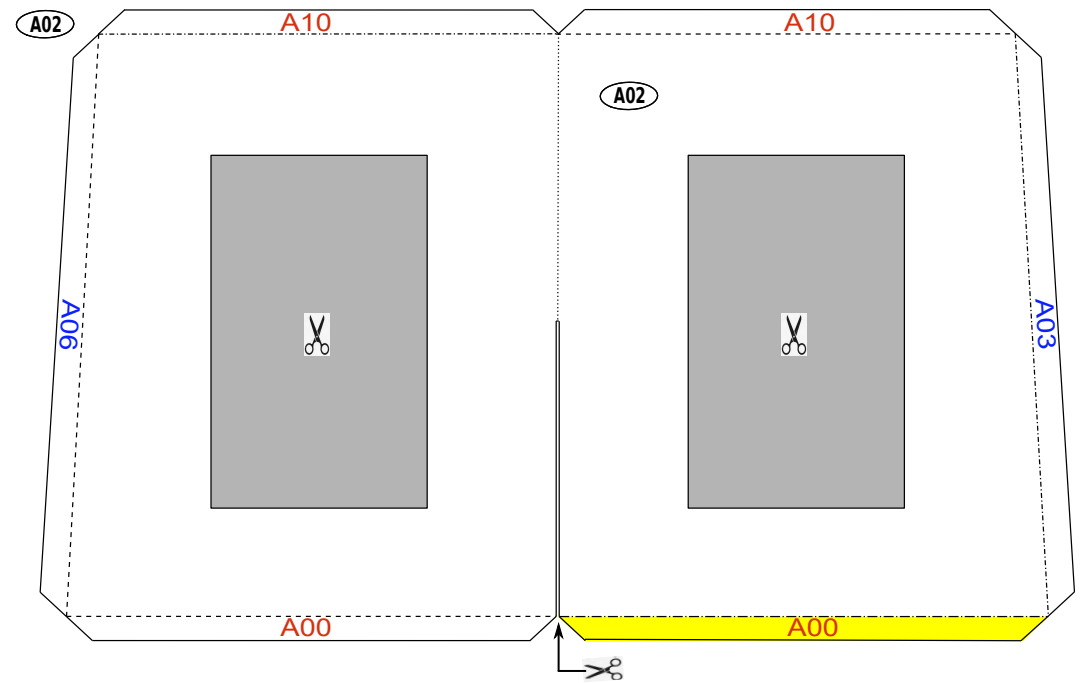
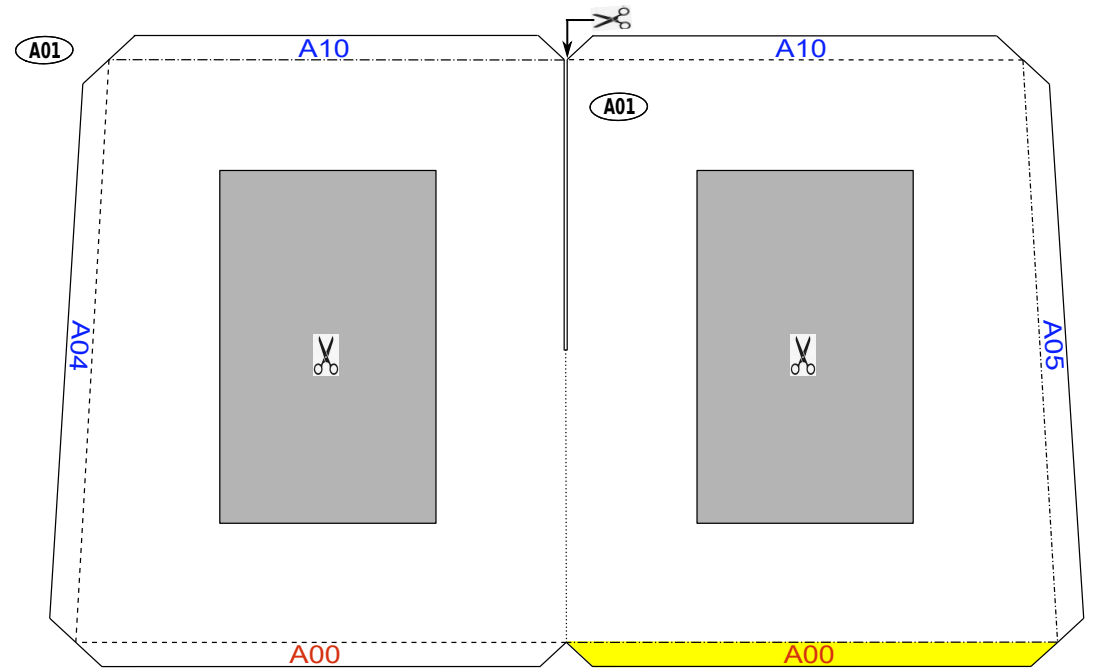
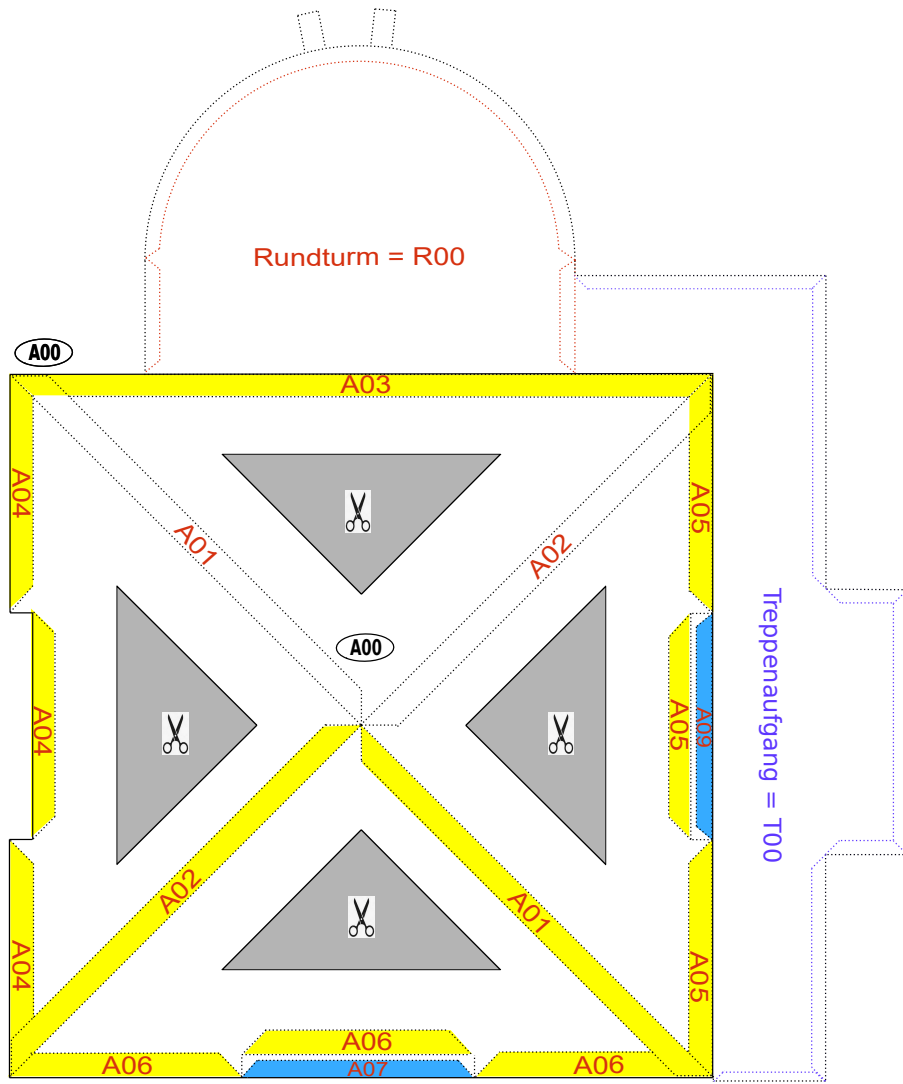
Dieses Papiermodell besteht aus **21 Bastelbogen DinA4**.
Es umfasst das bauliche Dreigestirn, also Turm, Kapelle und Gasthaus.
Der Massstab ist ca. 1:100. Der Schwierigkeitsgrad kann je nach Lust und Können von mäßig bis sehr schwierig selbst gewählt werden.
Die Konstruktion erfolgte ausschließlich anhand von Fotos und persönlicher Besichtigung. Aktuelle Baupläne o.ä. hatte ich leider nicht.
Eine kurze Bauanleitung und erweiternde, zusätzliche Bauteile oder als Ersatz zum Selbstausschneiden finden Sie zum Download auf meiner Homepage: <https://www.alexgeigenberger.de> .

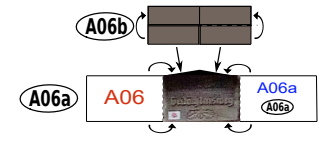
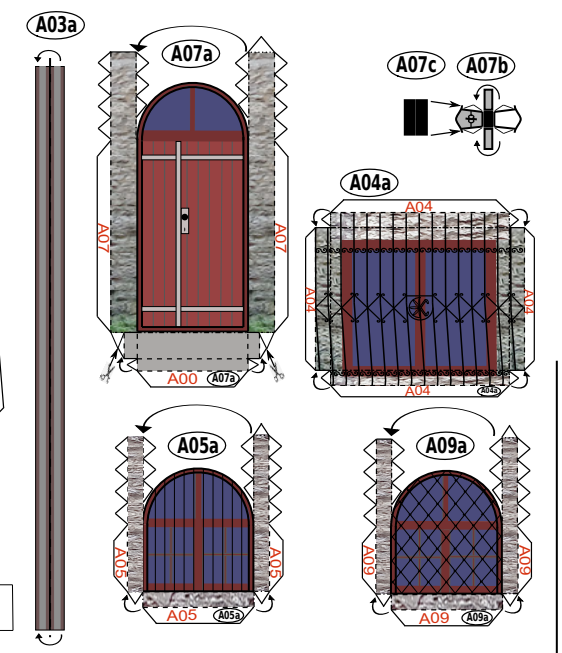
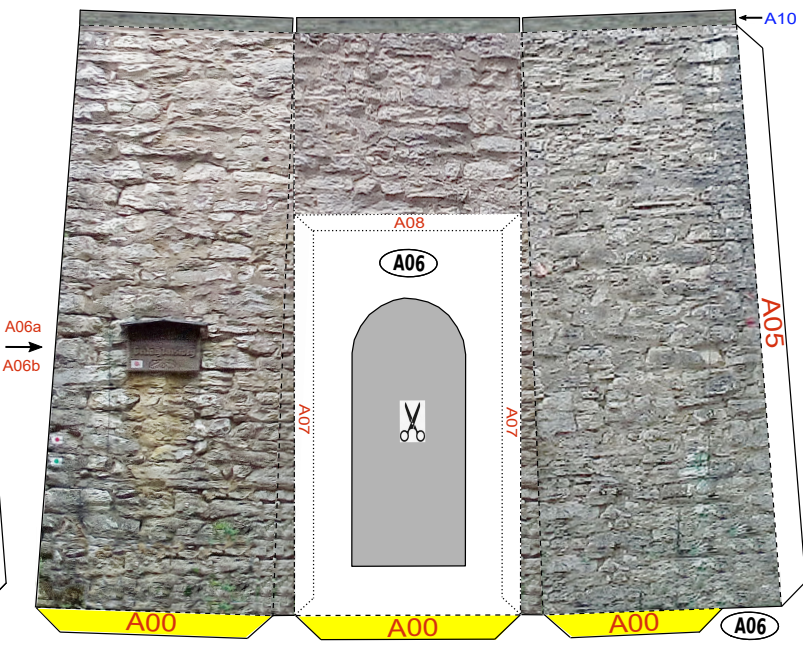
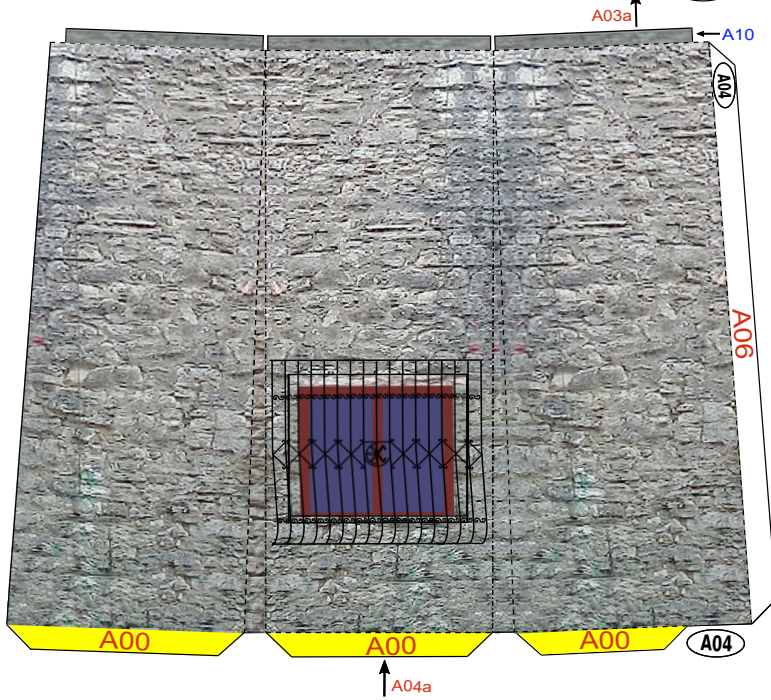
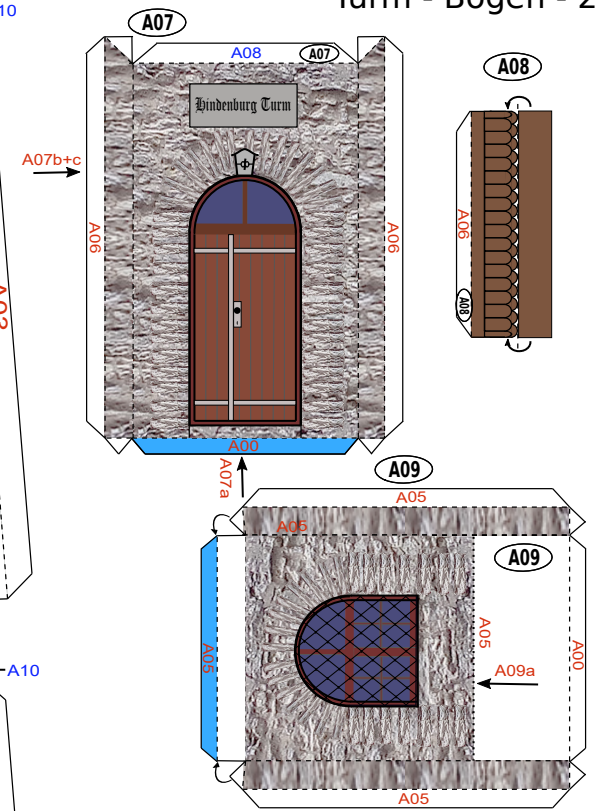
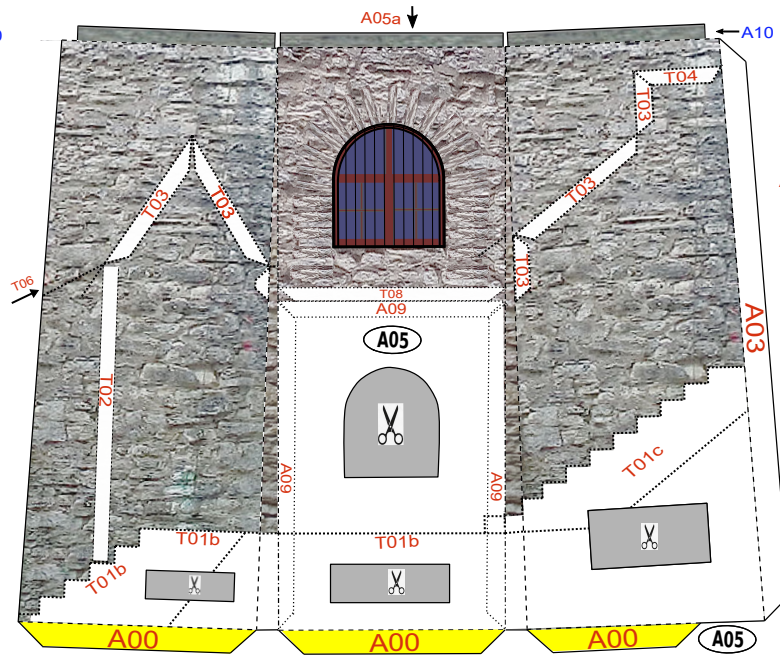
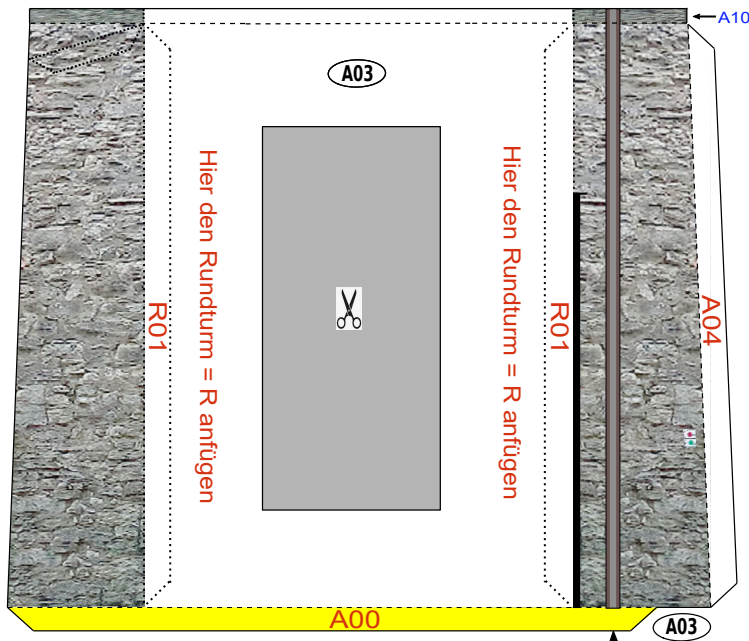
Östlich von Nürnberg, etwa 5 km südöstlich der mittelfränkischen Stadt Lauf a.d.Pegnitz, liegt der Moritzberg. Mit seiner exponierten Insellage bildet dieses bewaldete Bergmassiv eine der prägenden Landmarken im Vorland der mittleren Frankenalb. Er gilt als der Hausberg der Nürnberger Wanderer. Alle markierten Wege führen teilweise sehr steil und nach Regenfällen auch ziemlich glatt nach oben. Das Zufahrtssträßchen ist auf der letzten Viertelstunde gesperrt. Das bauliche Dreigestirn am bewaldeten "Gipfel" besteht aus:

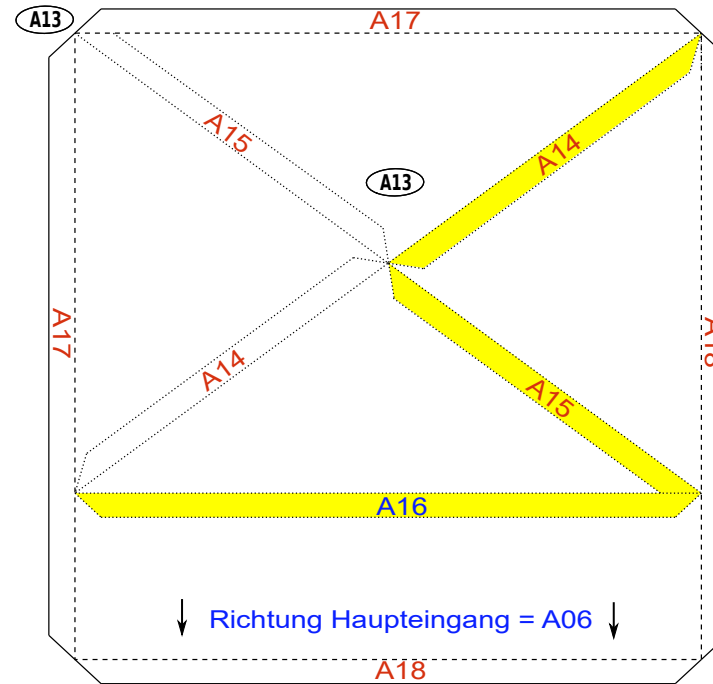
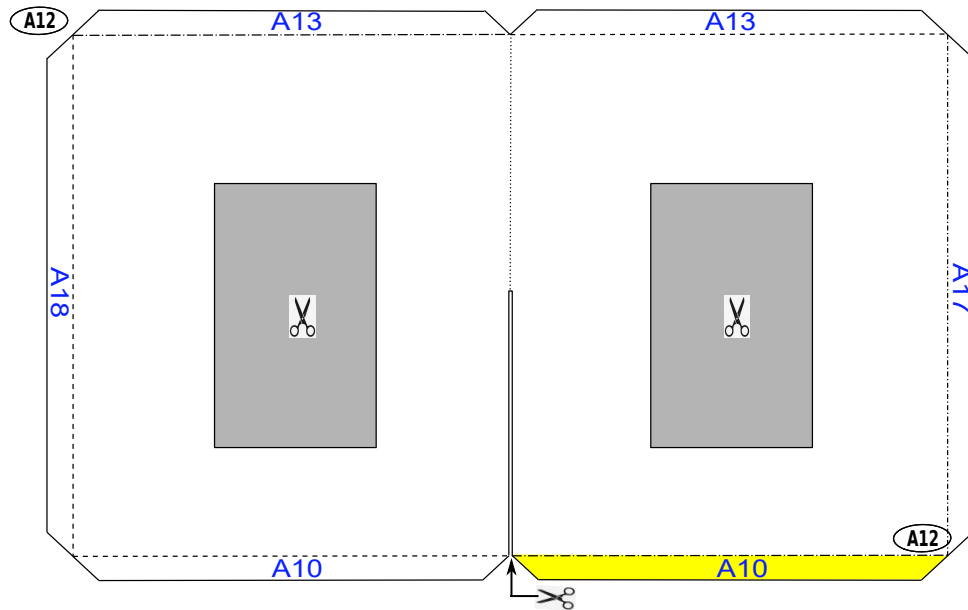
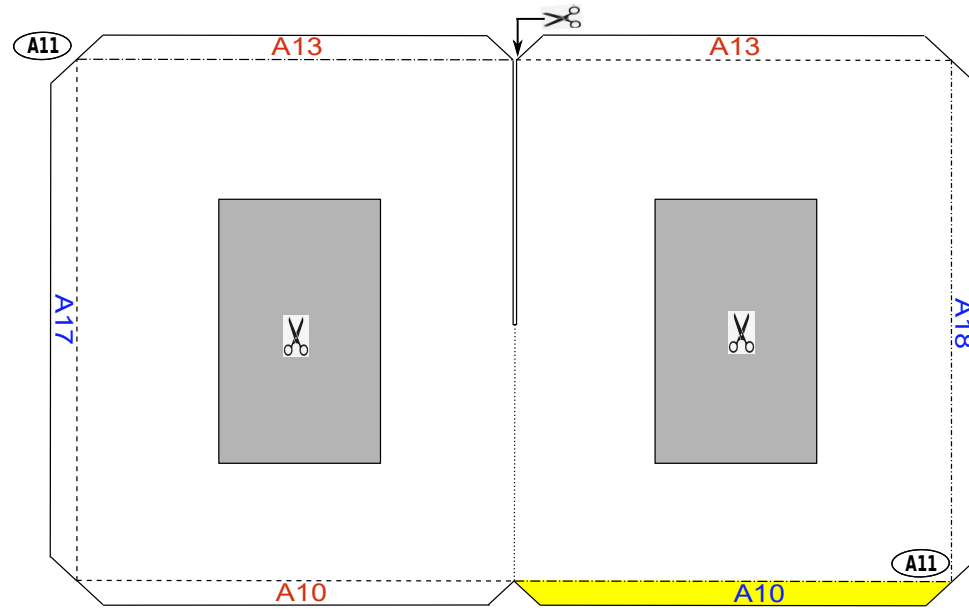
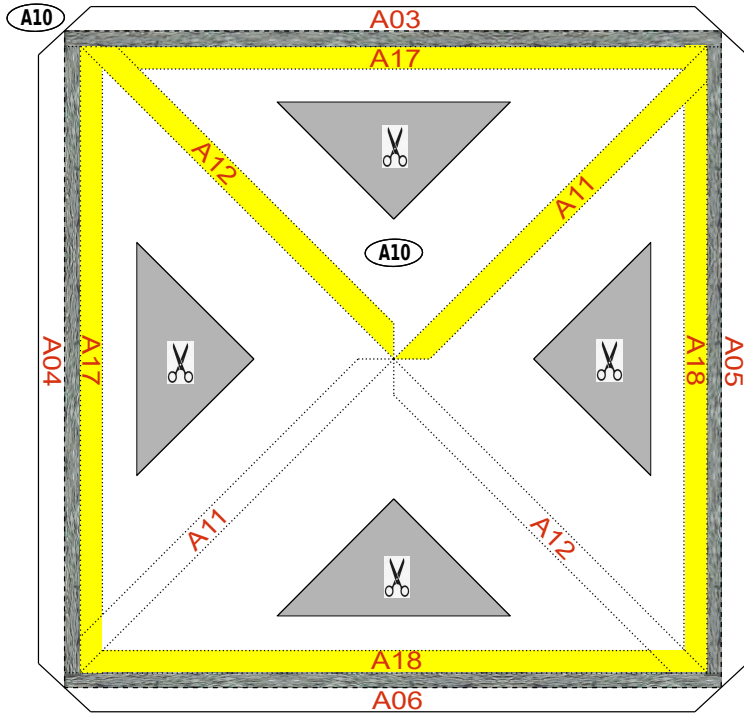
- Aussichtsturm (1910-1913),
- Mauritiuskapelle (ab 1419) und
- Gasthaus (ab 17.Jhd.).

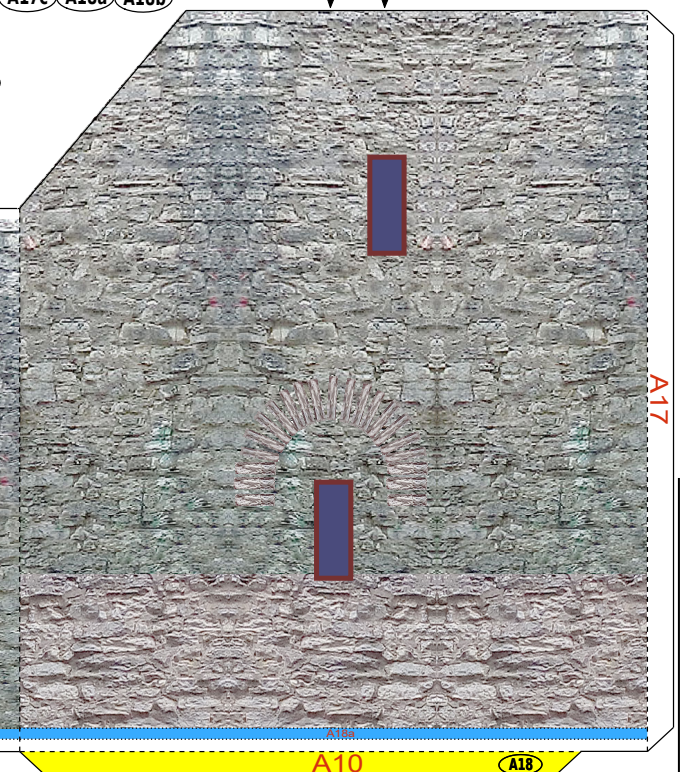
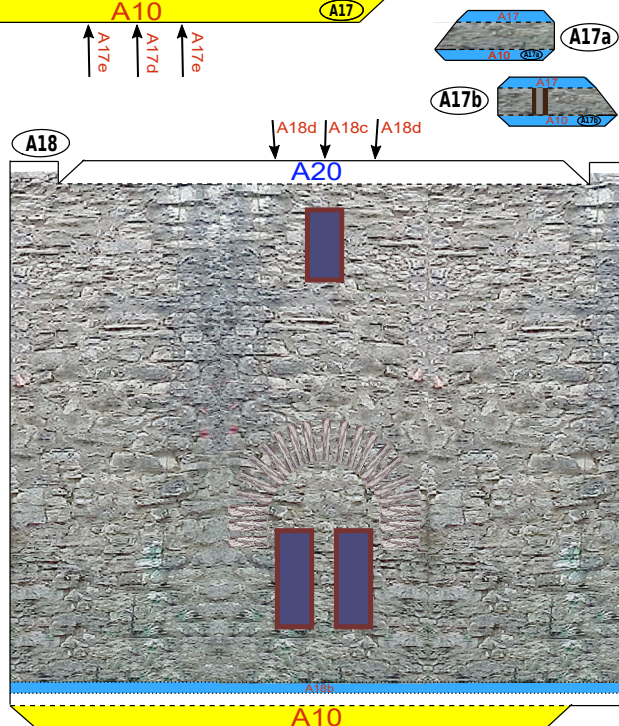
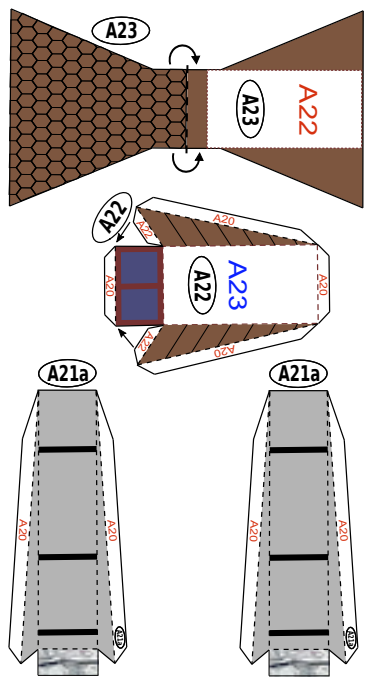
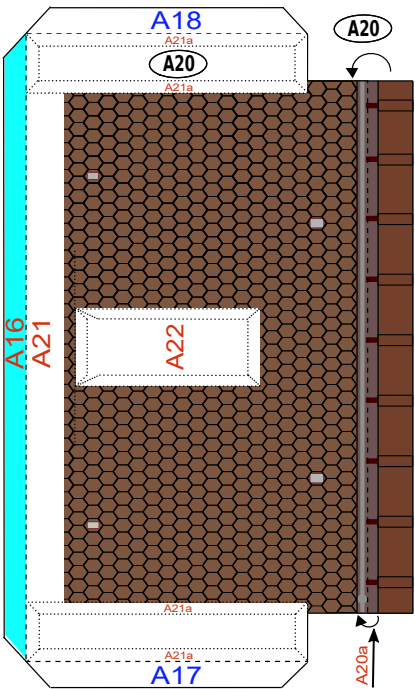
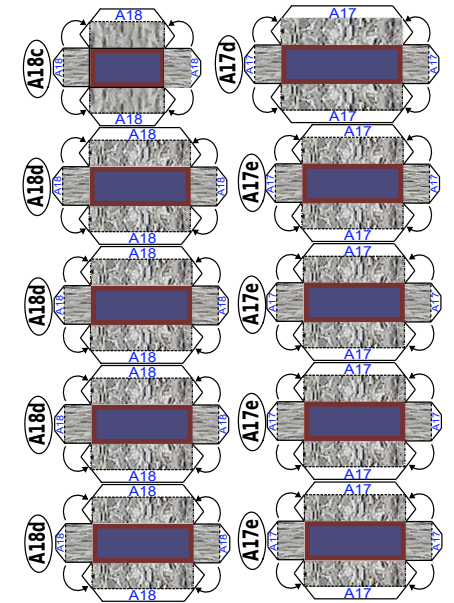
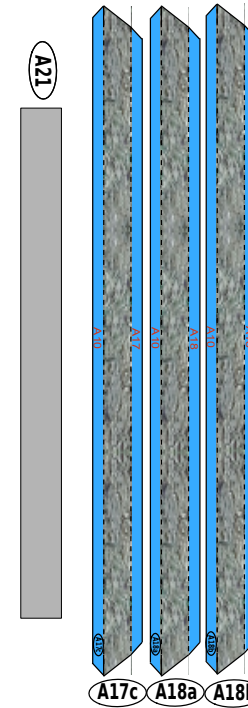
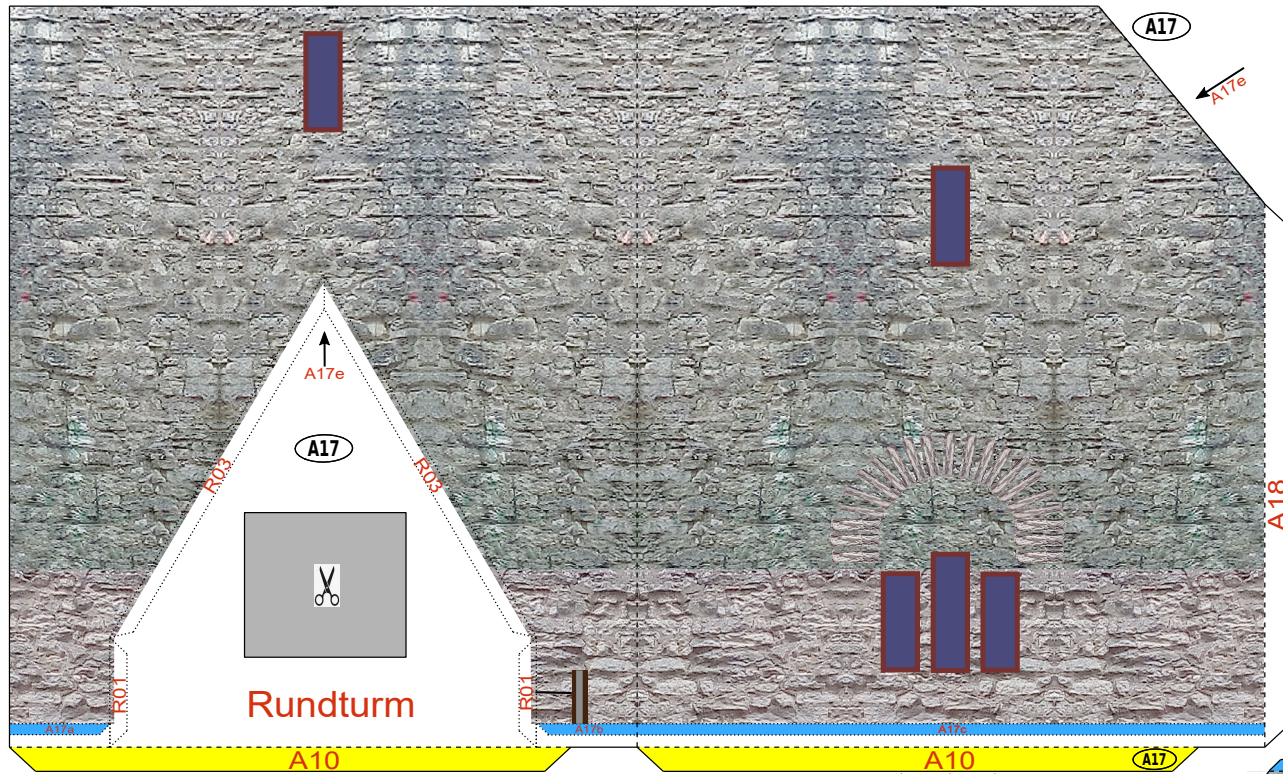
Hier oben auf diesem exponierten Platz siedelten bereits Menschen der Stein- und Bronzezeit. Mitte des 19.Jhd. war sogar die Errichtung der Befreiungshalle oder der Walhalla in Planung. Gottseidank wurde nichts davon realisiert, sodaß wir heute die stille Ruhe und meist auch etwas Einsamkeit voll genießen können.

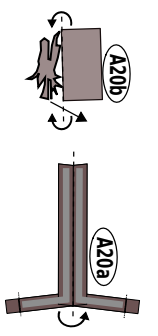
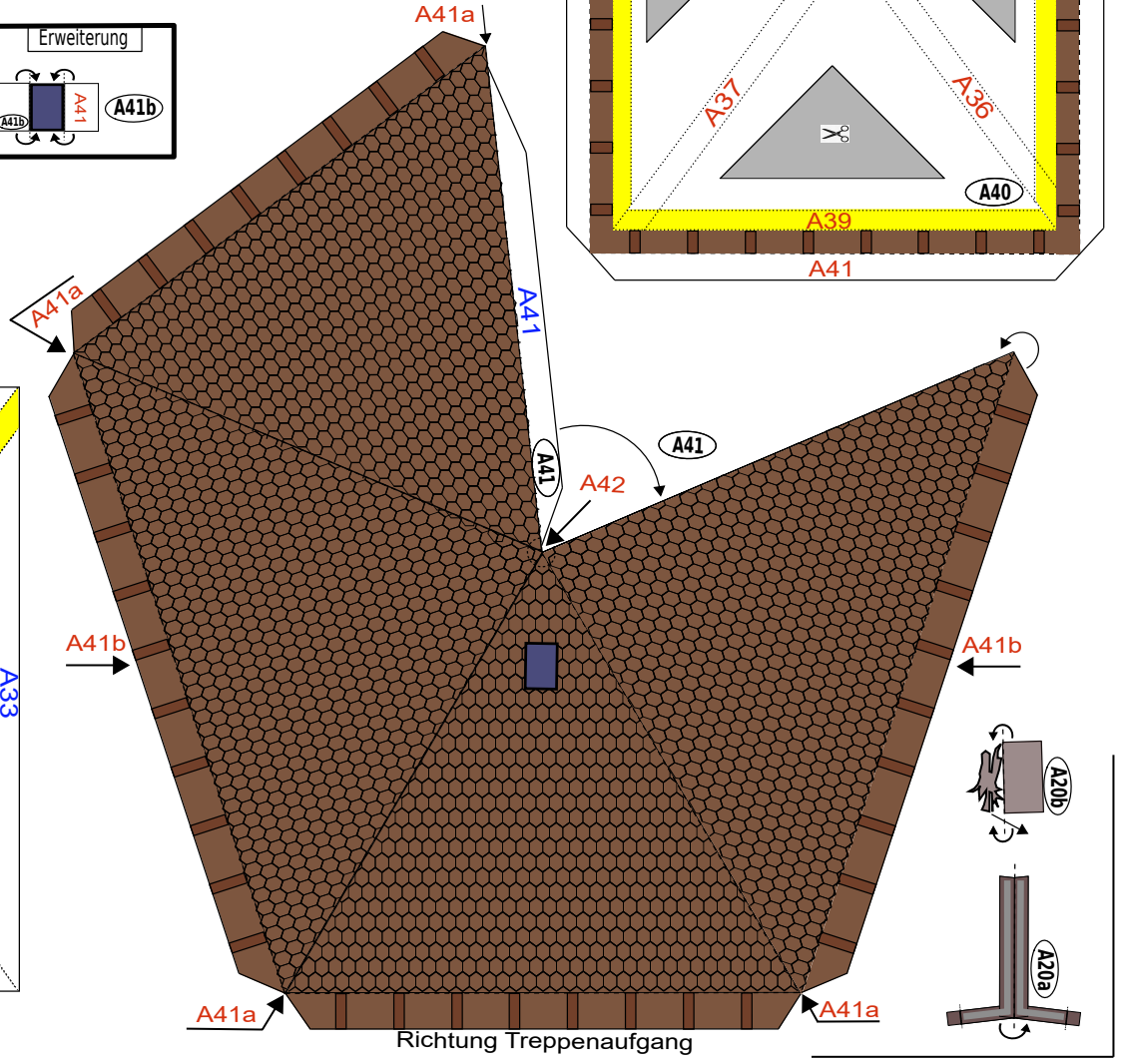
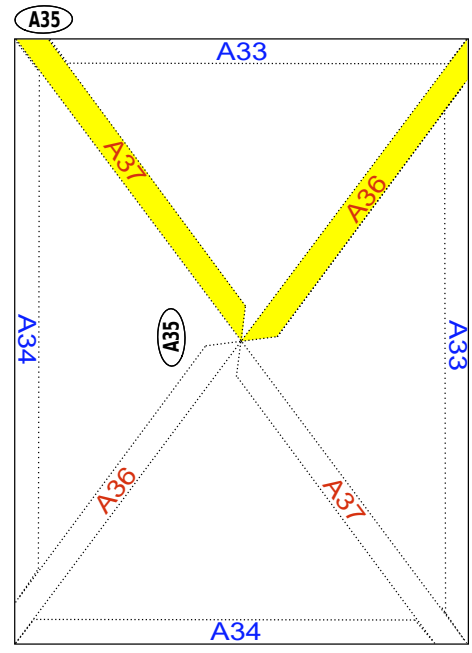
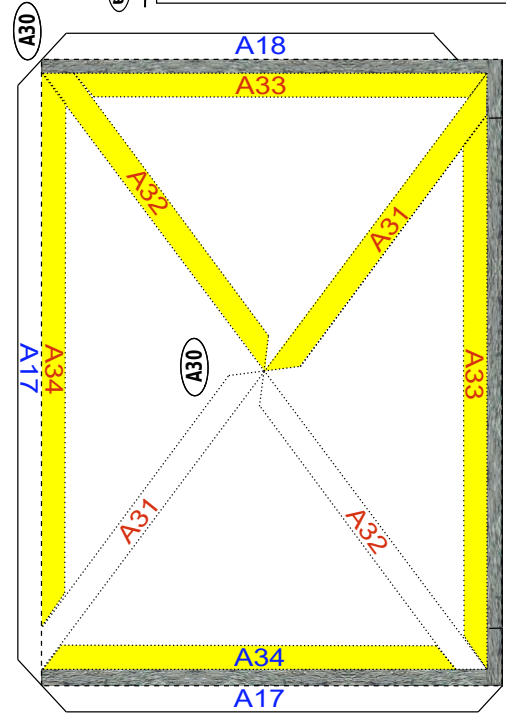
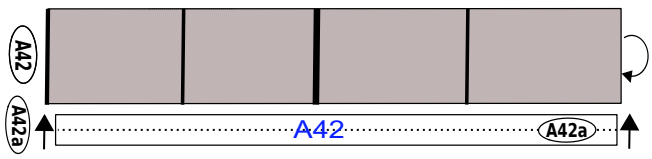
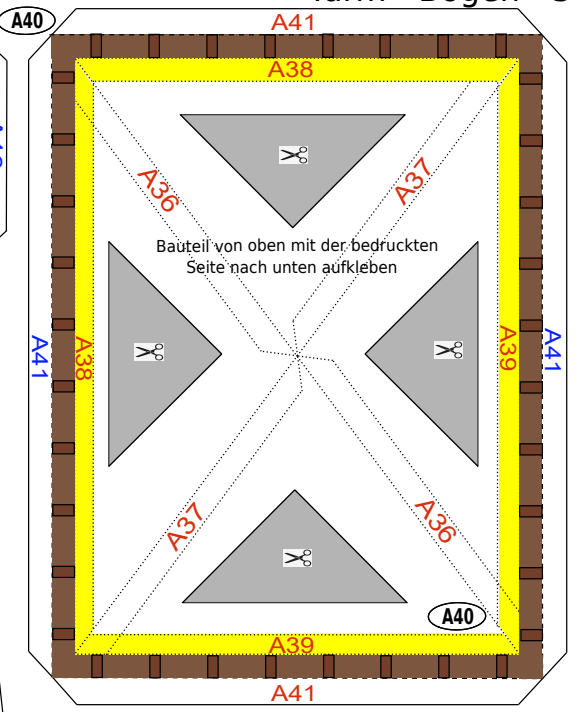
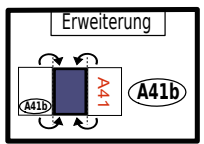
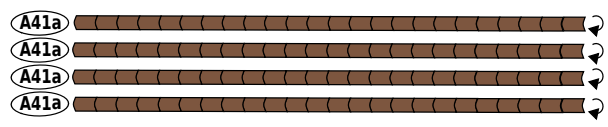
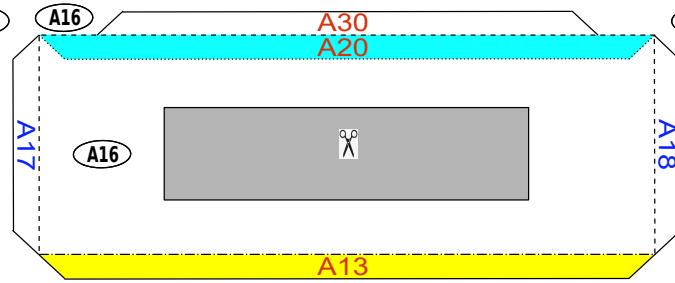
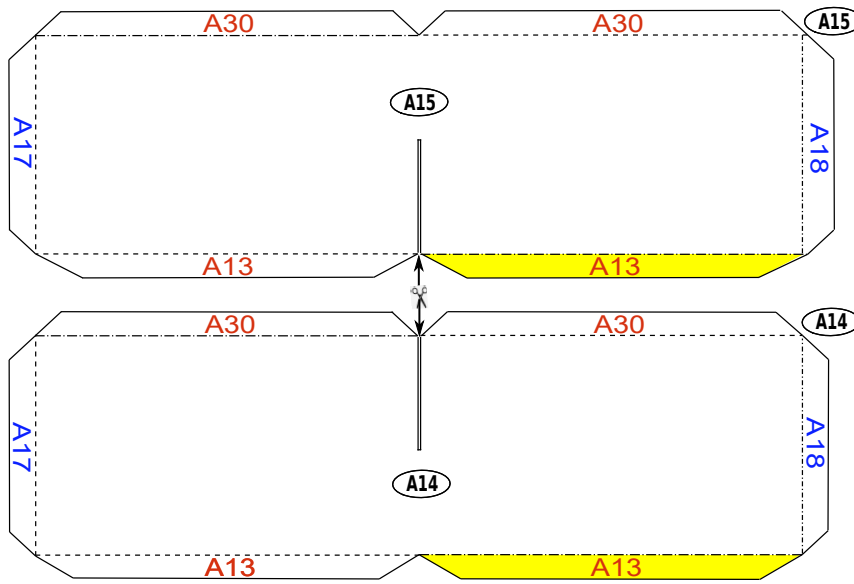
@copyright: Idee, Entwurf, Konstruktion und Realisation von A. Geigenberger, Nürnberg

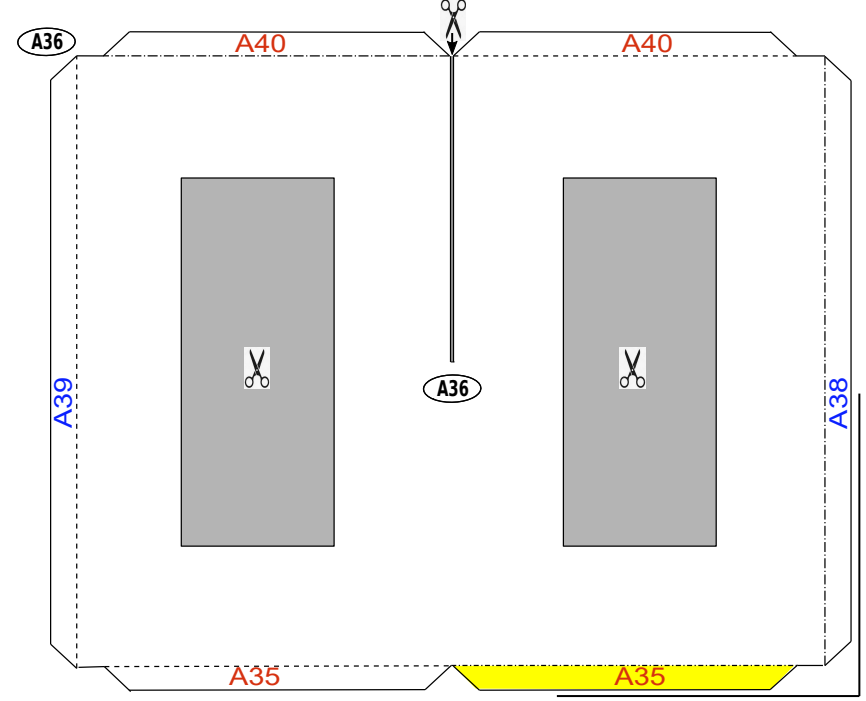
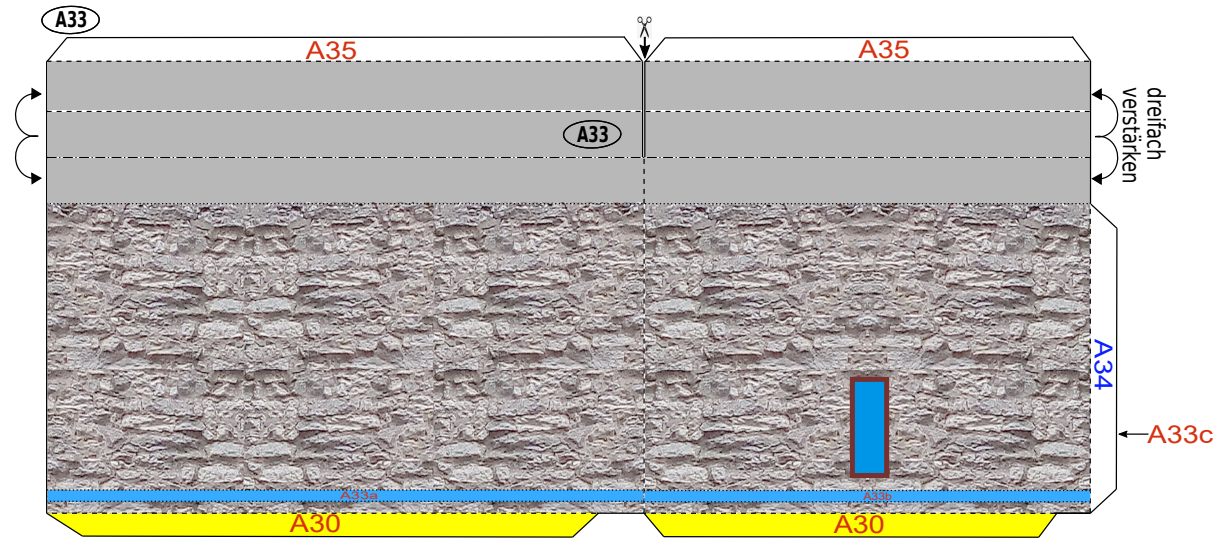
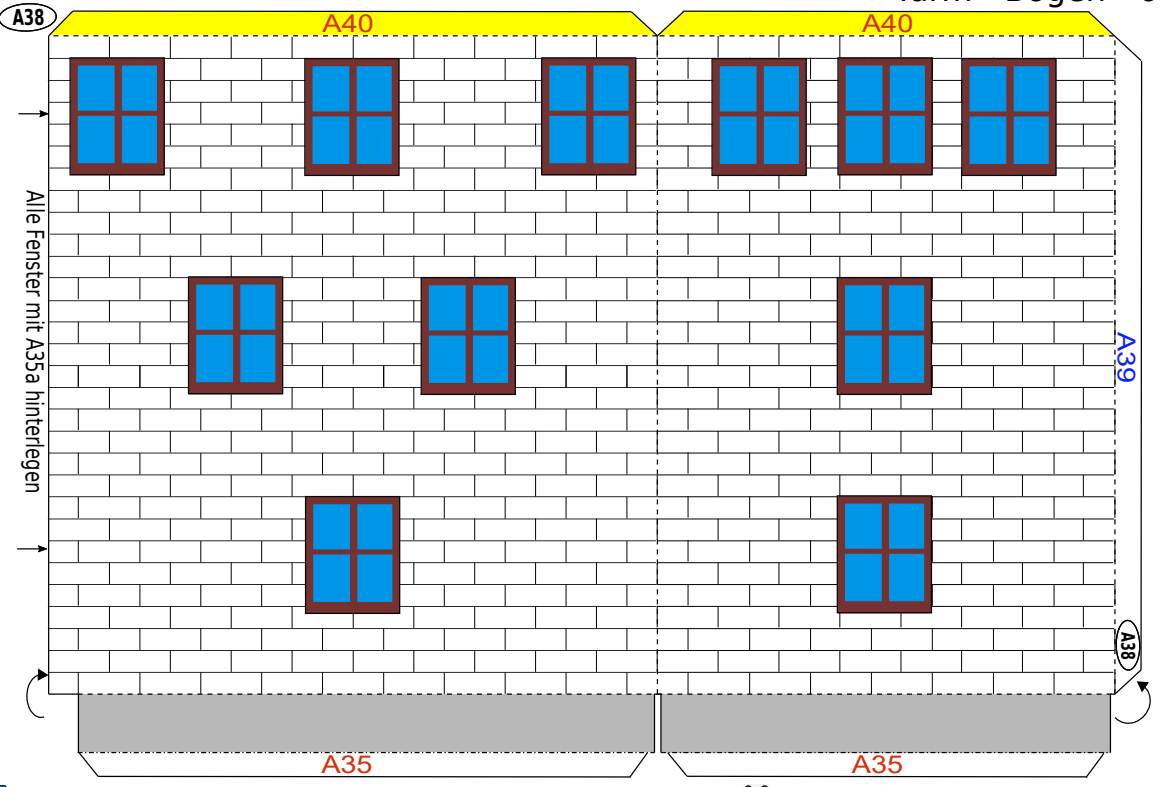
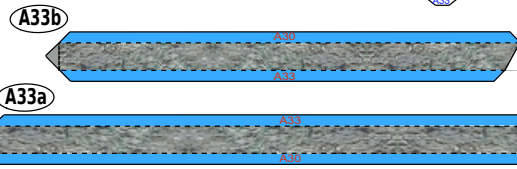
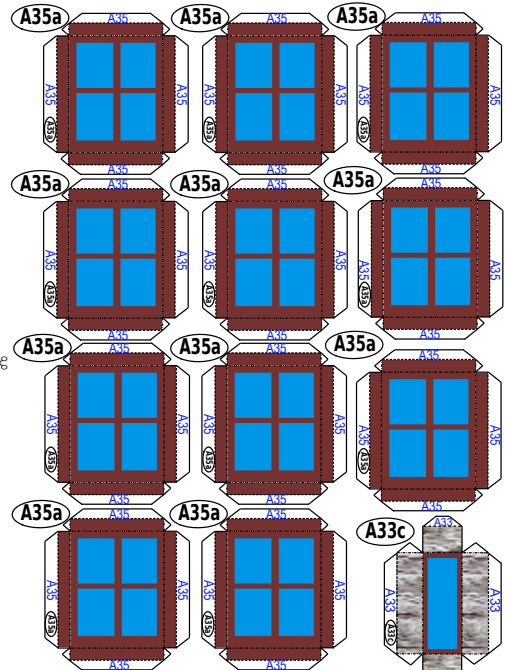
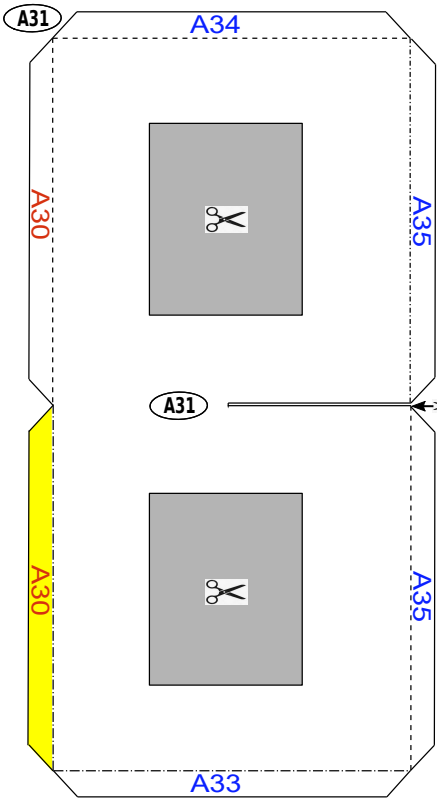


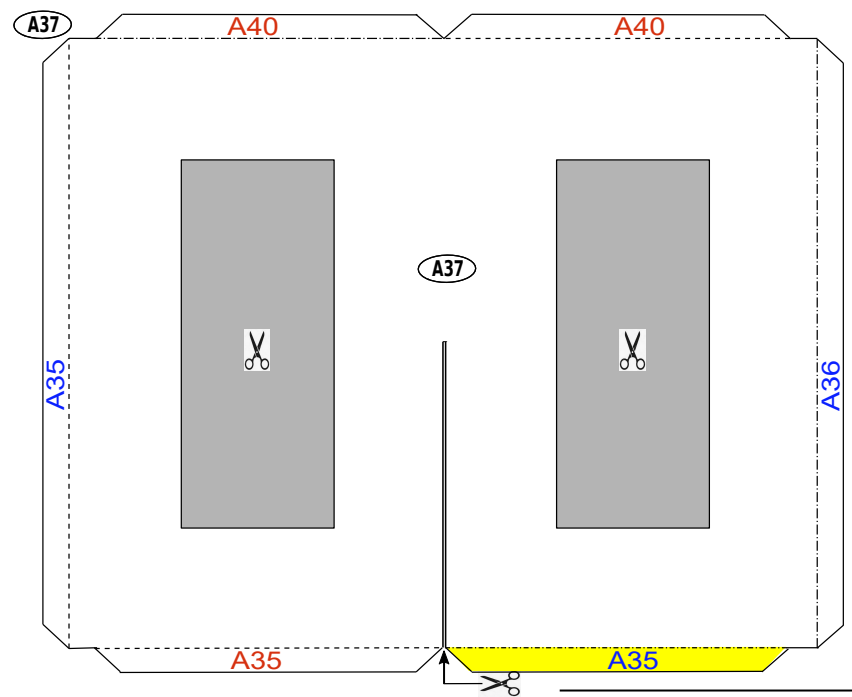
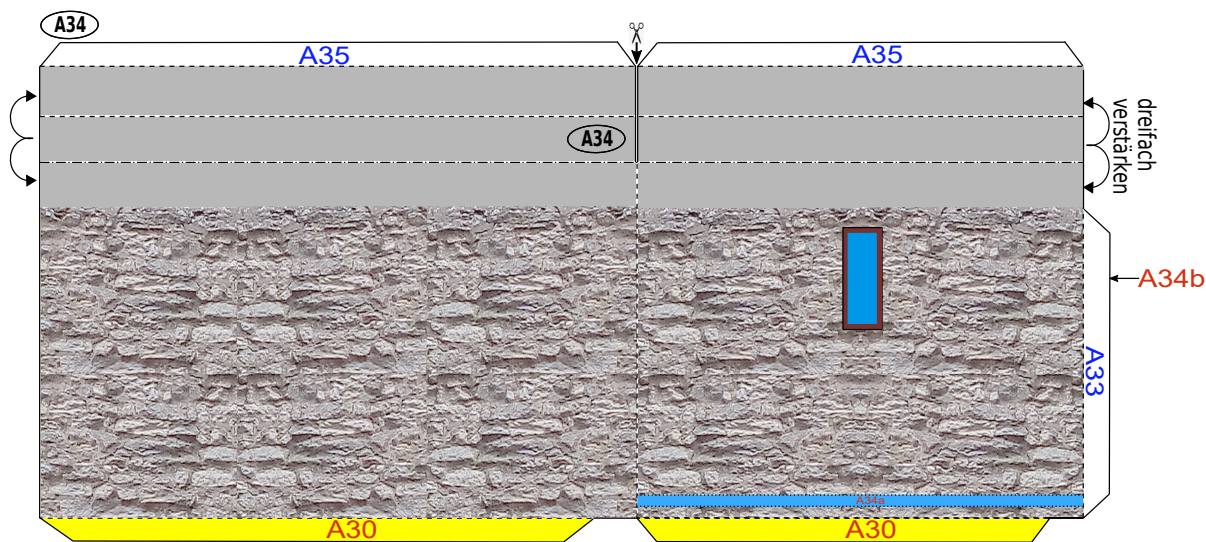
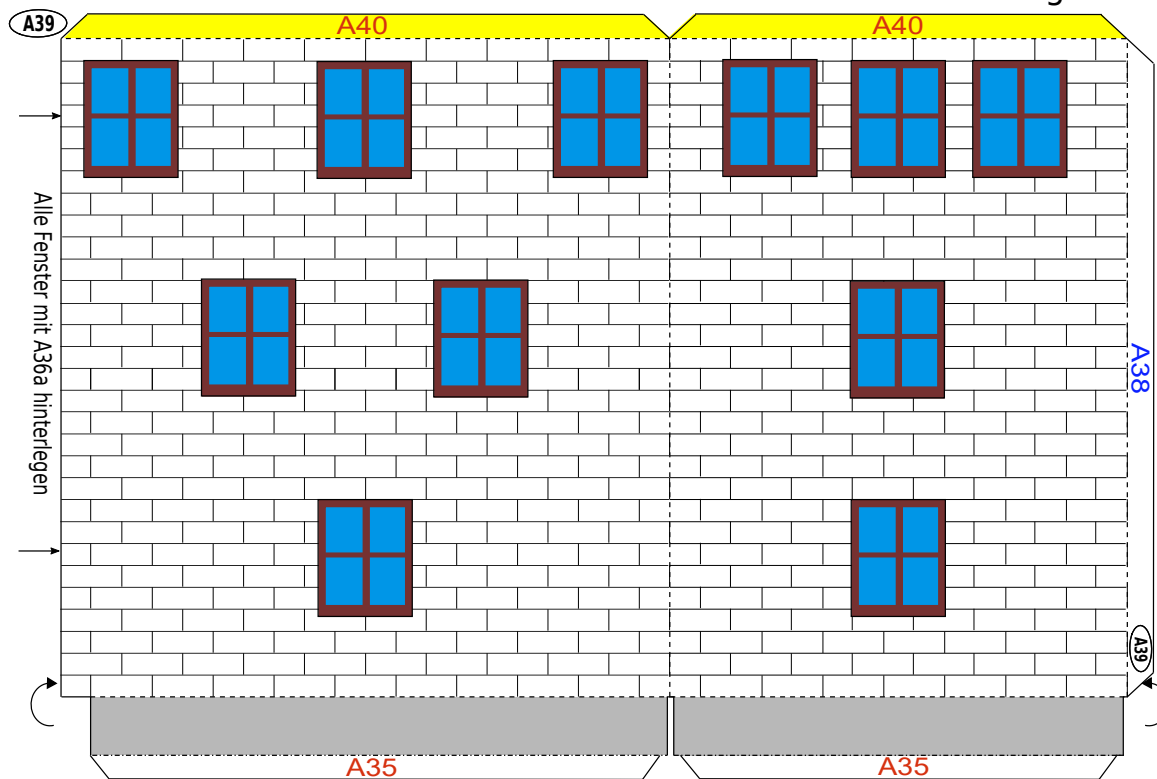
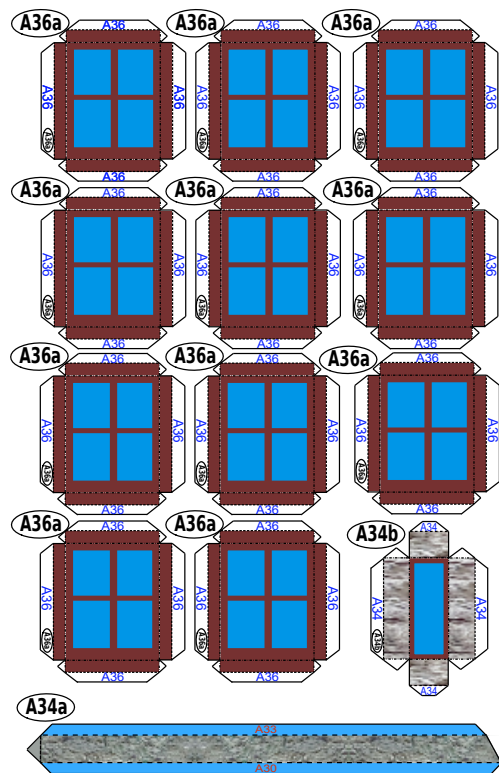
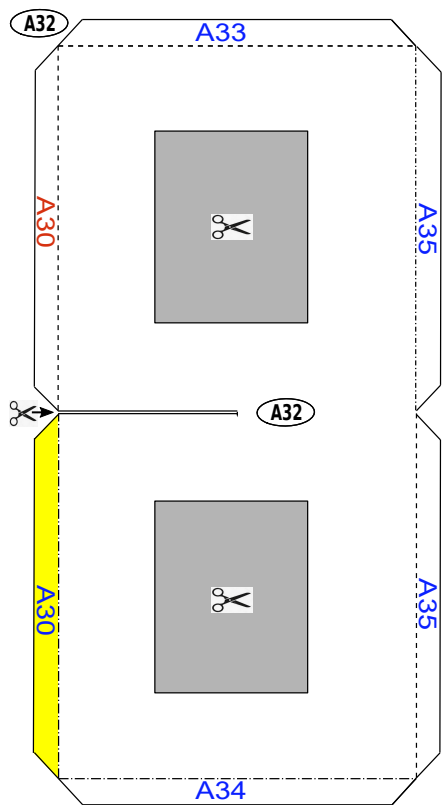


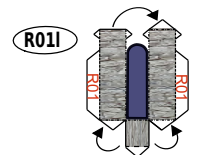
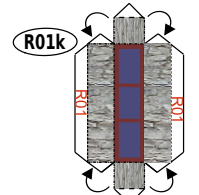
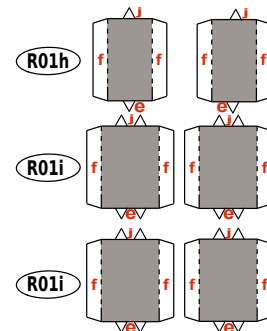
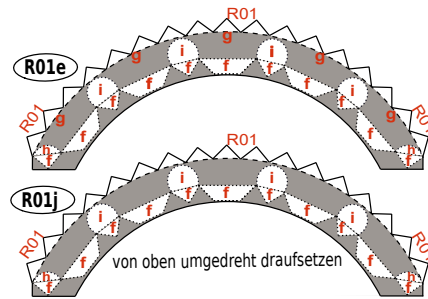
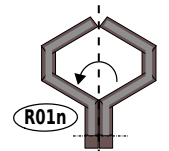
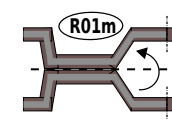
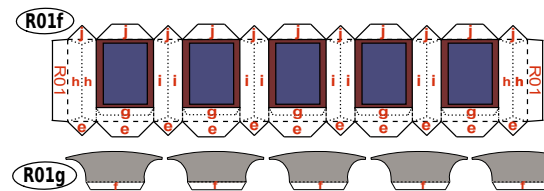
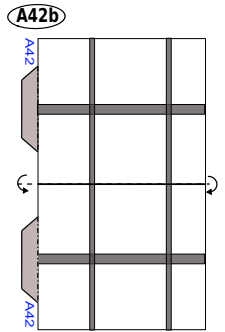
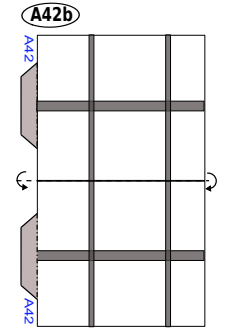
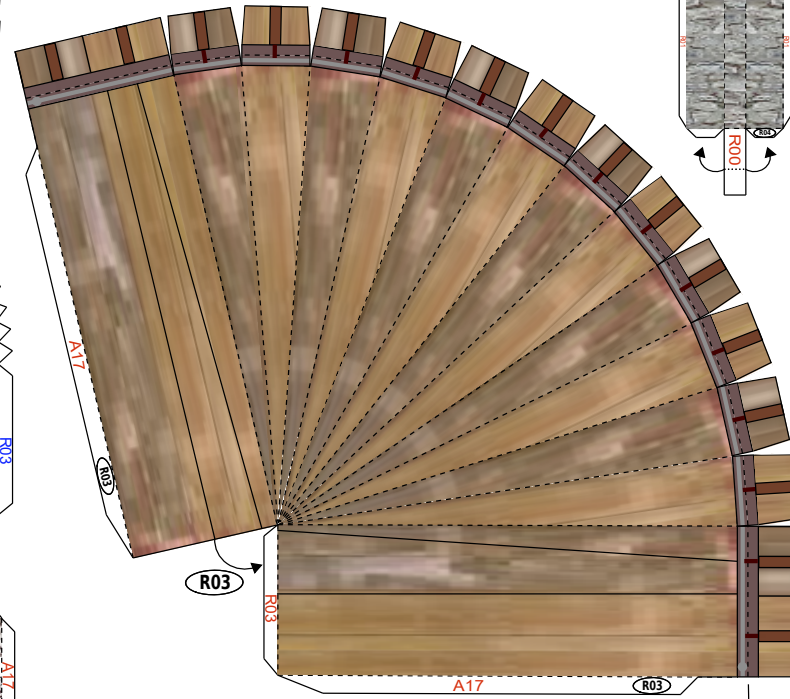
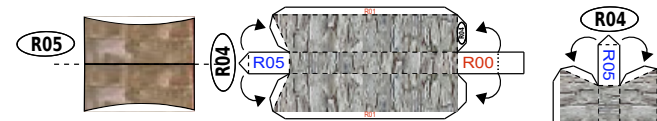
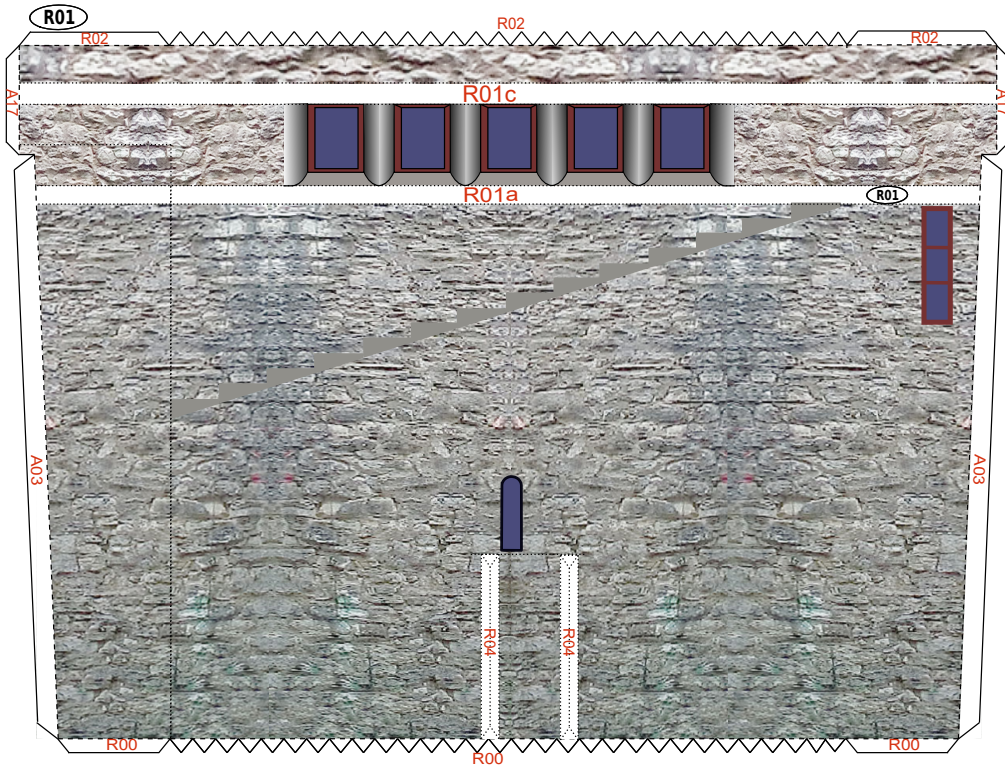
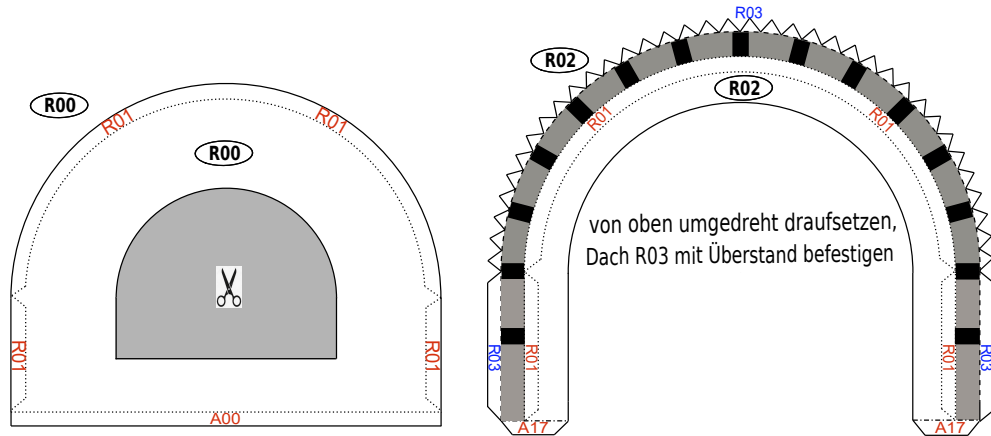
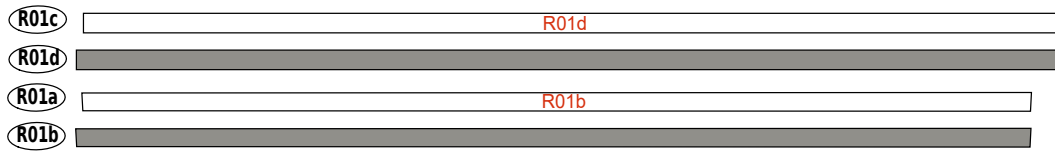


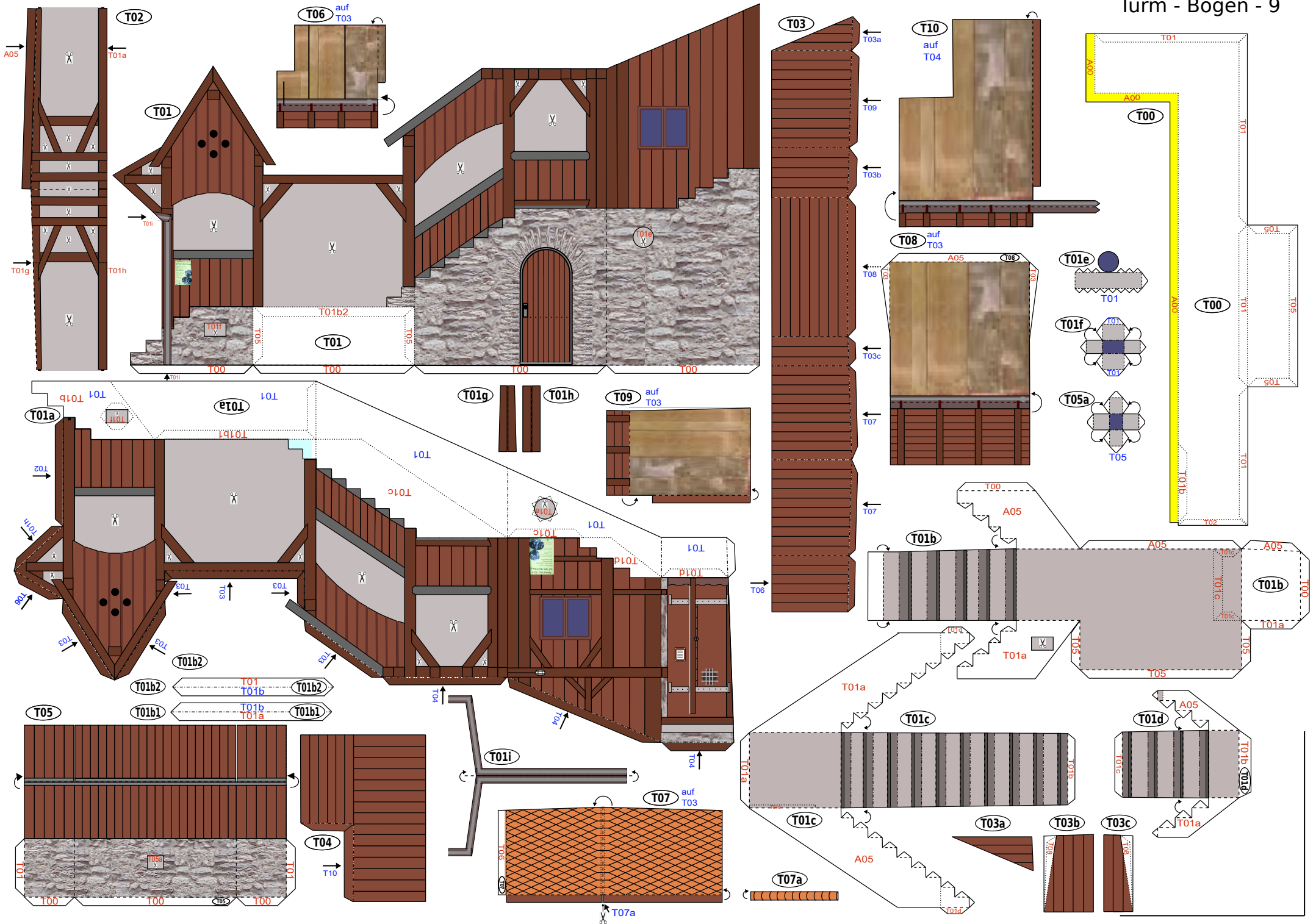


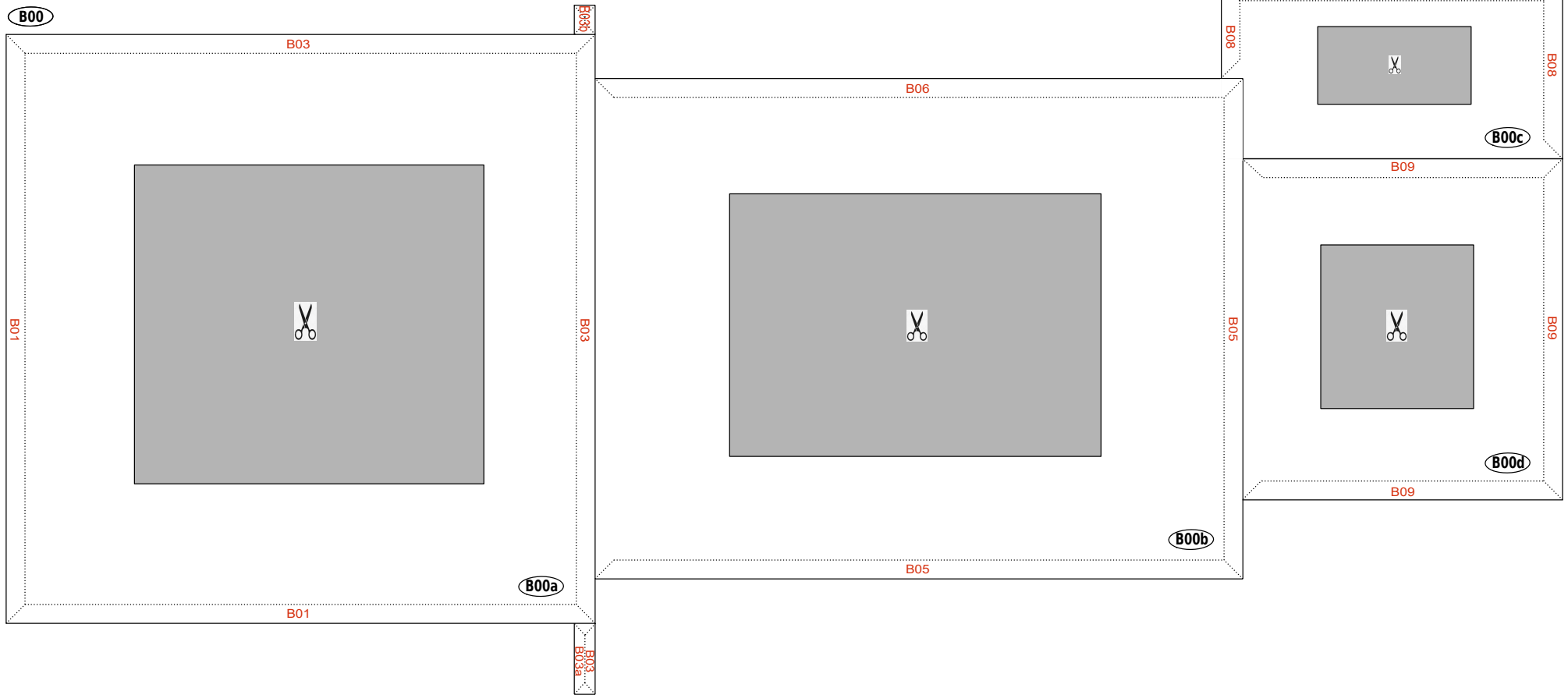




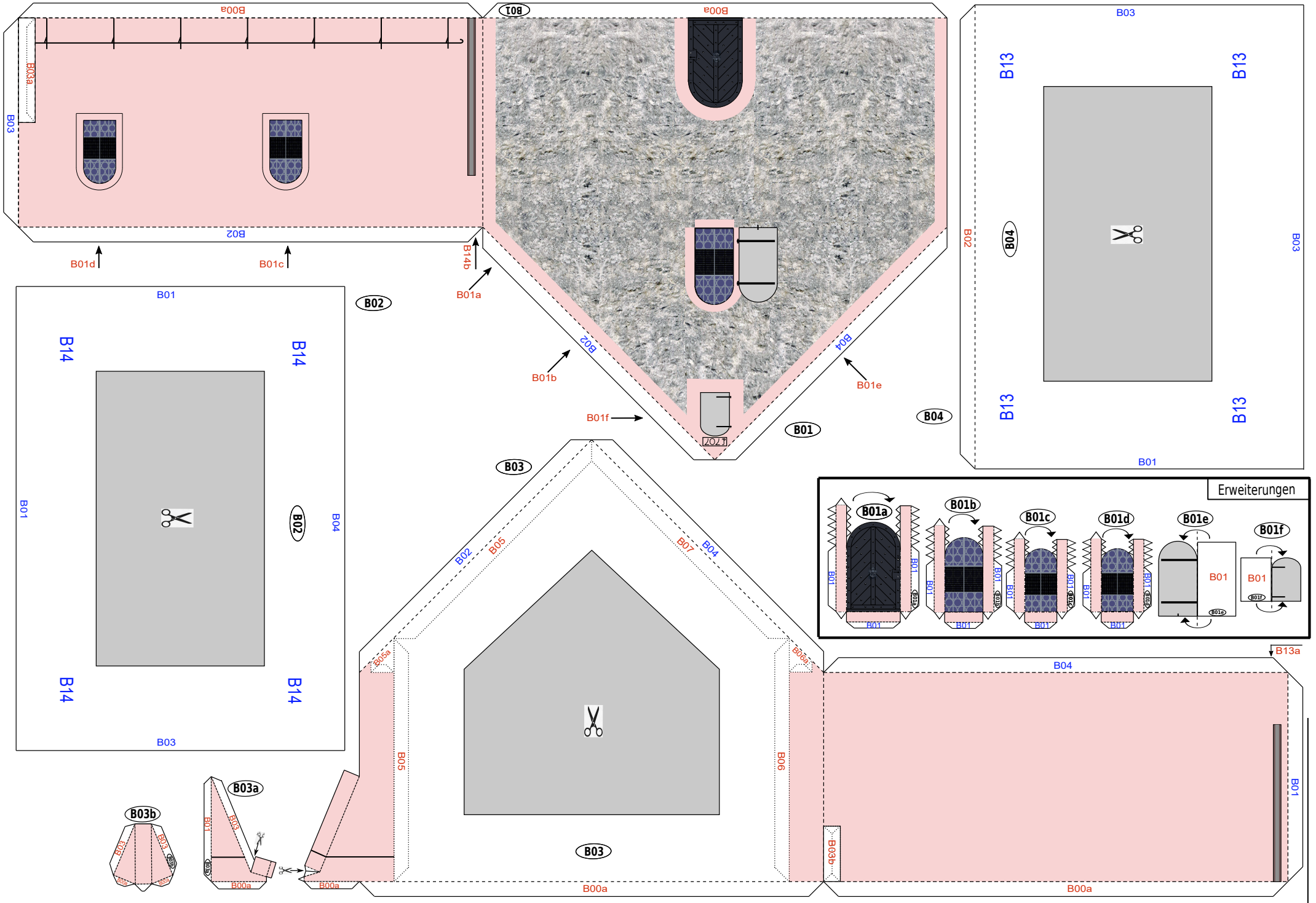


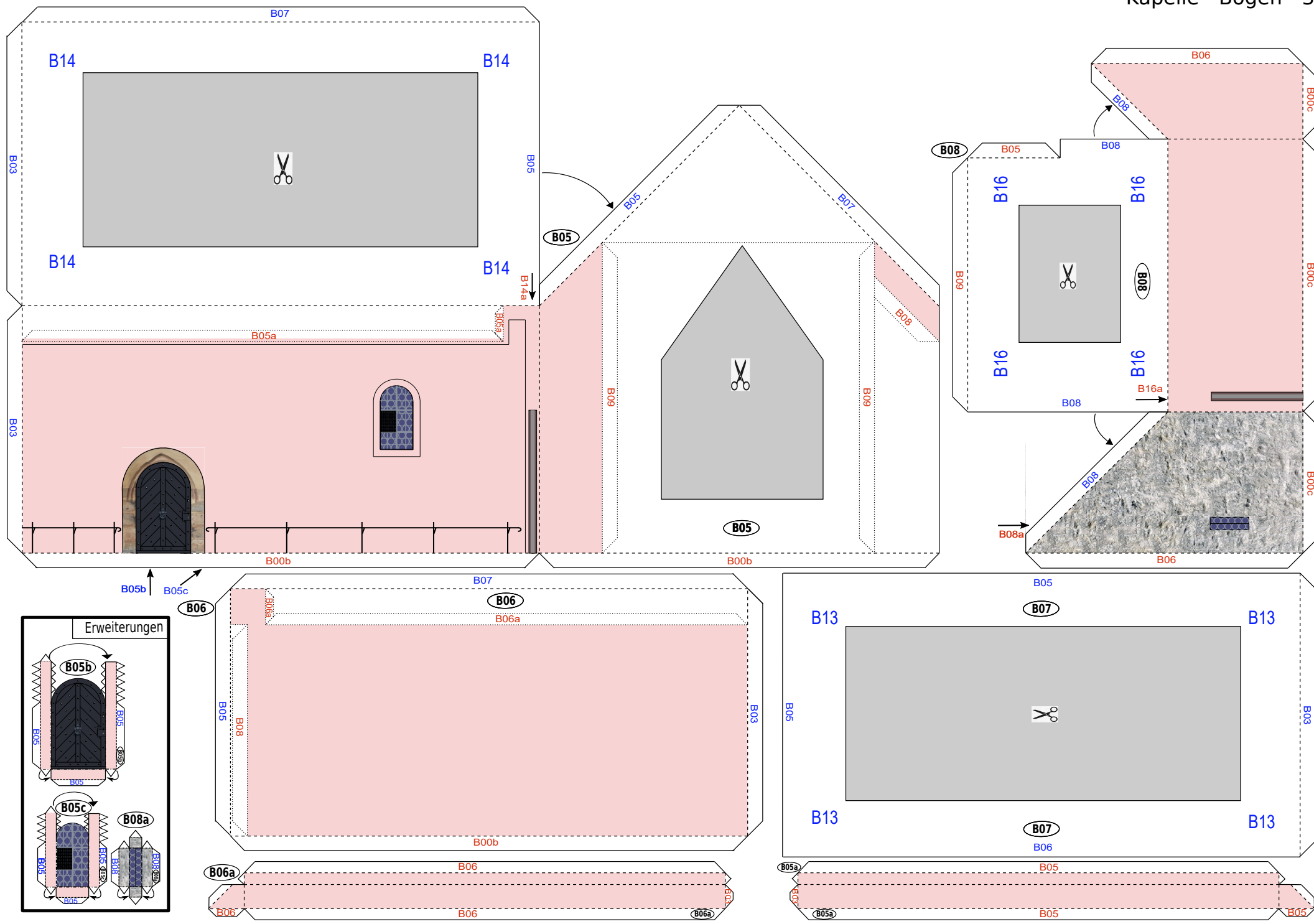


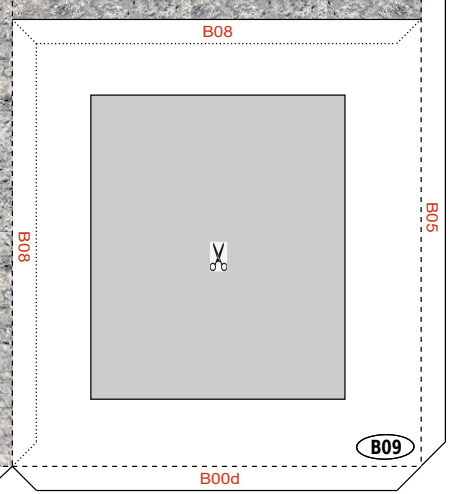
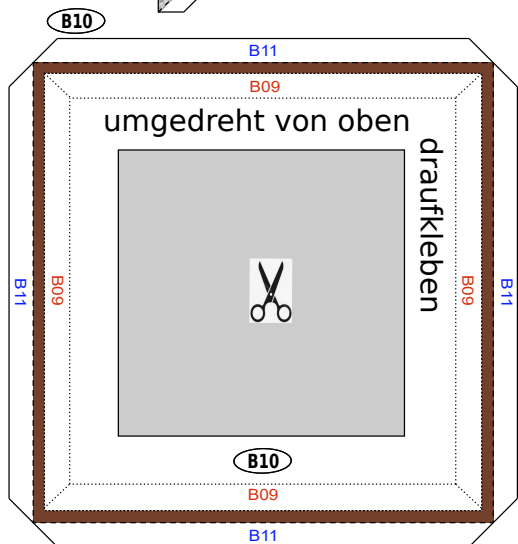
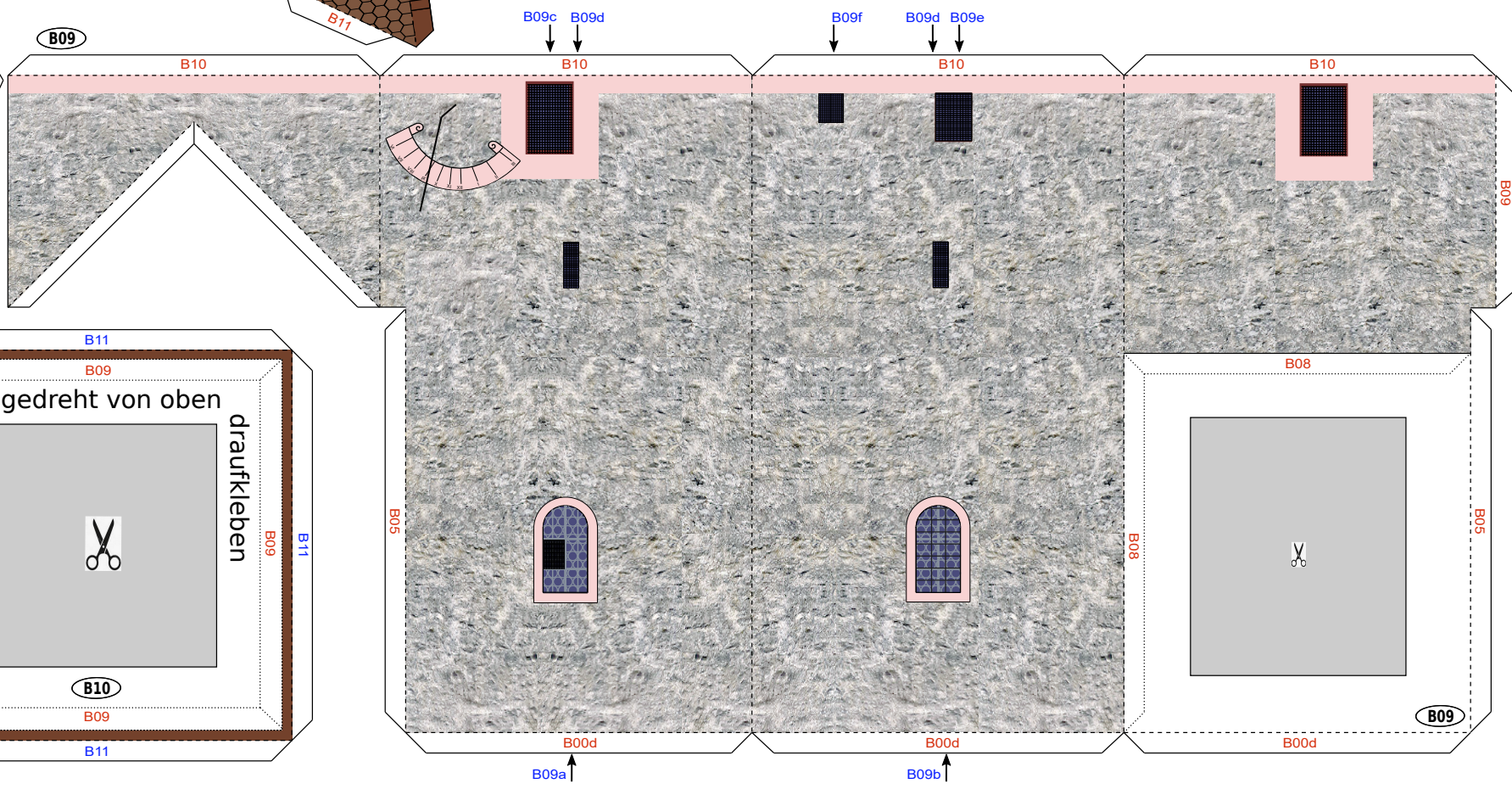
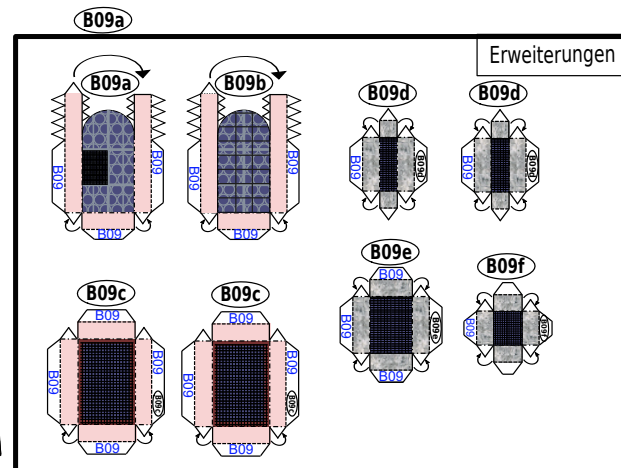
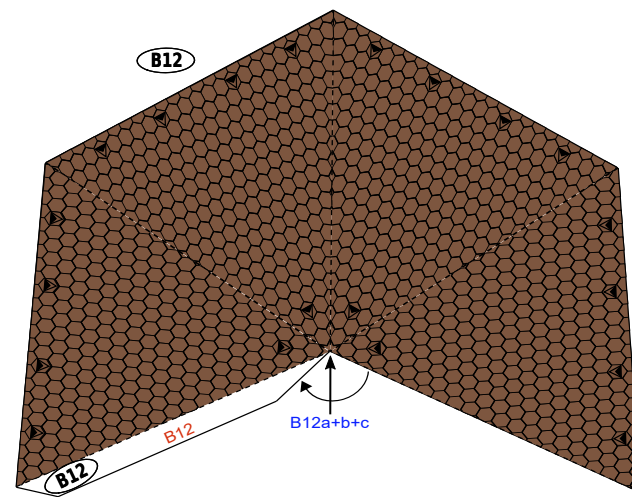
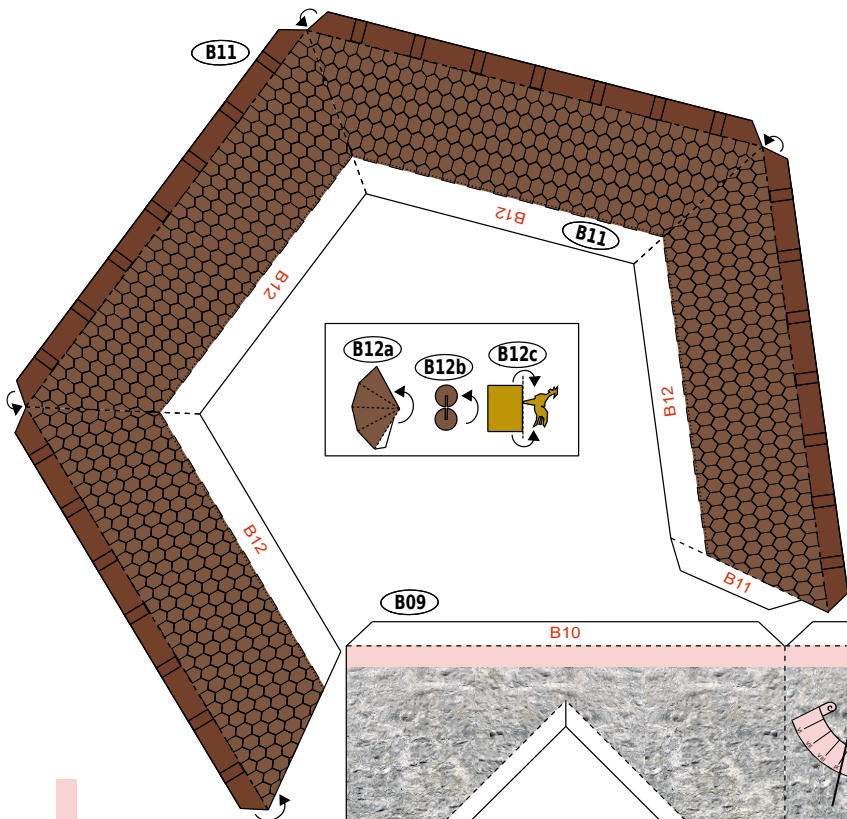


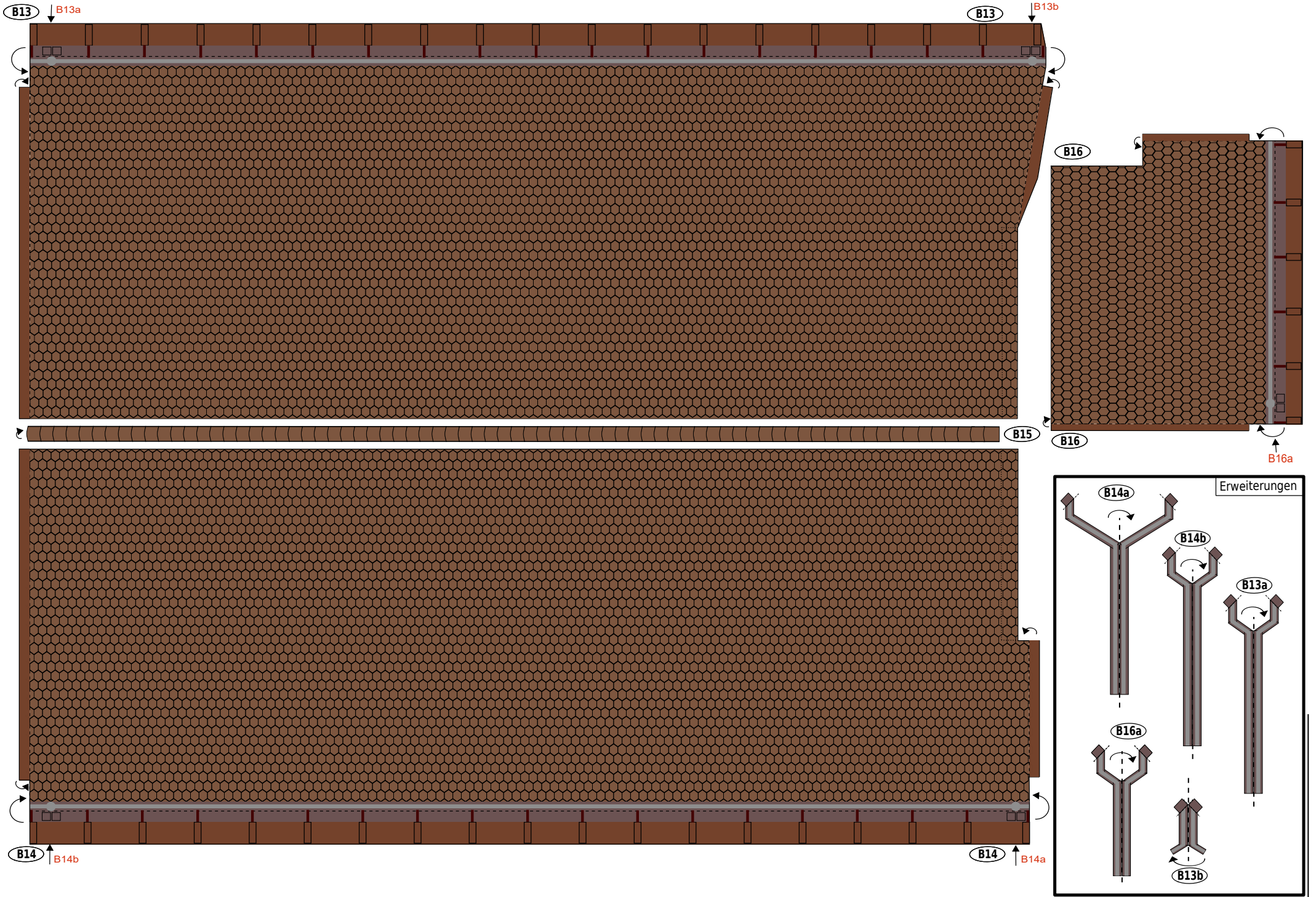


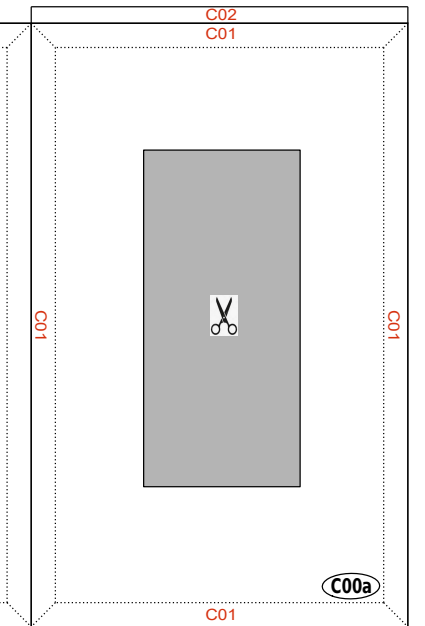
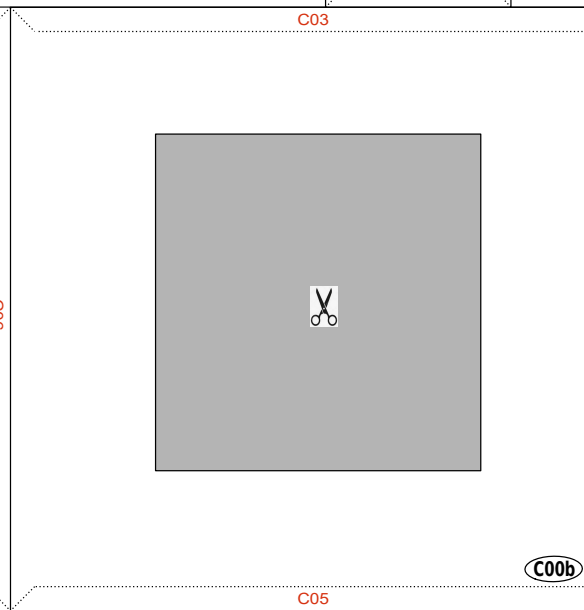
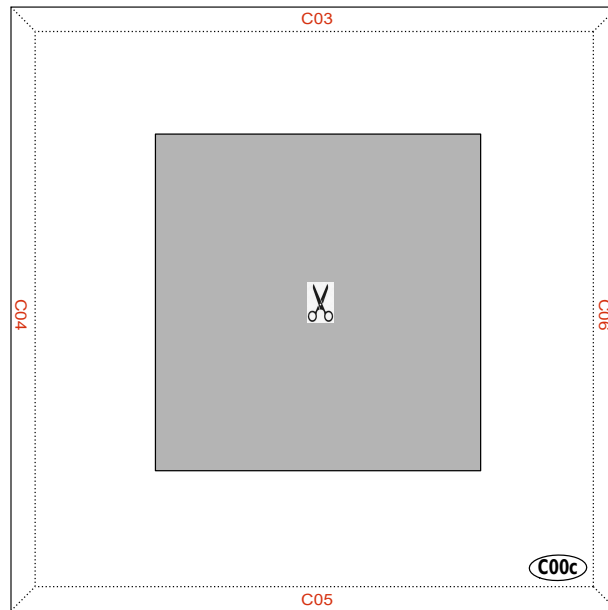
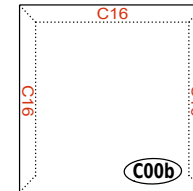
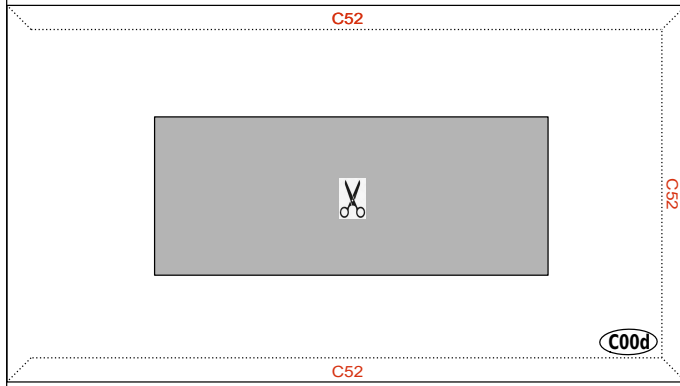
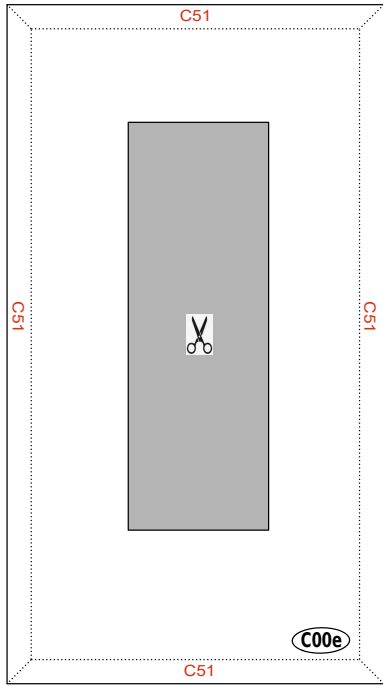
Kapelle - Bogen - 2

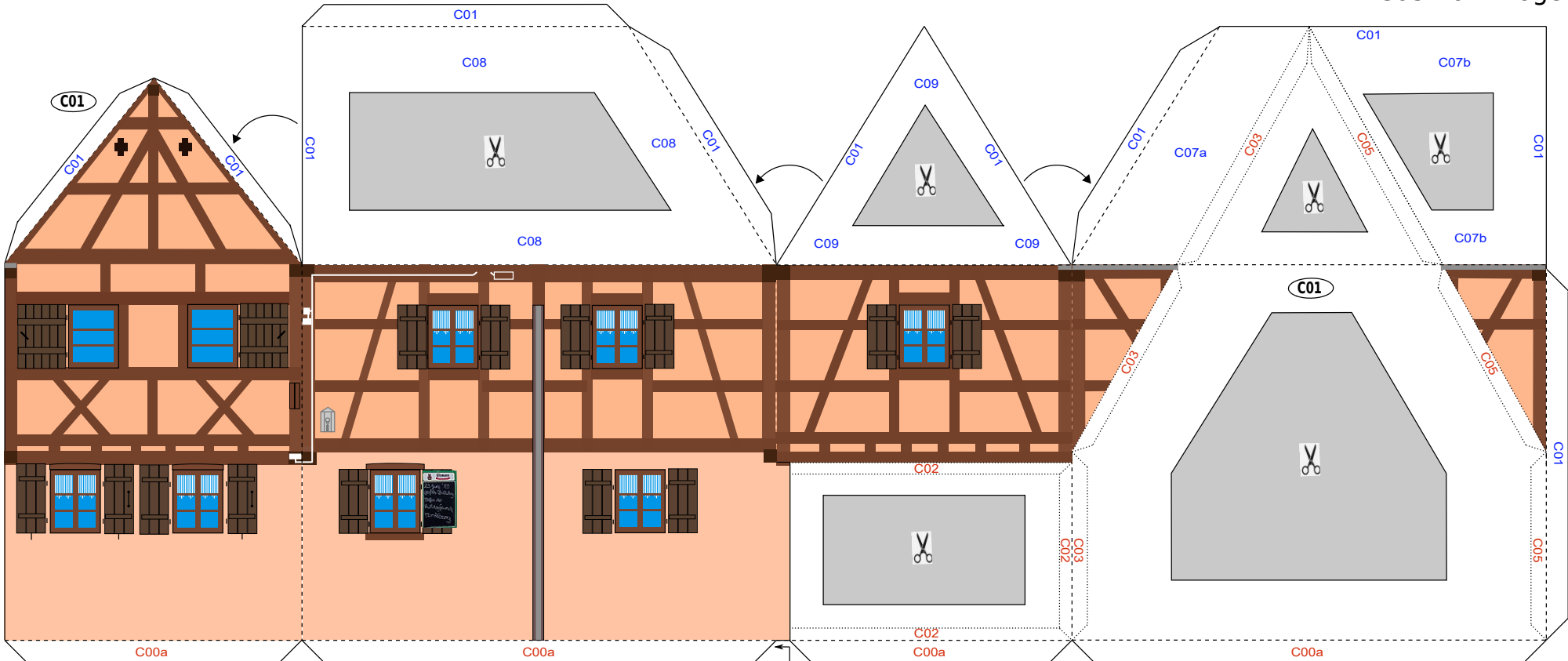






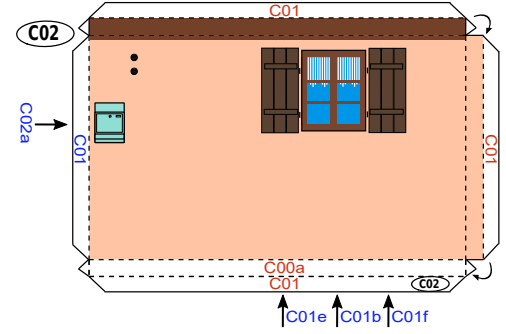
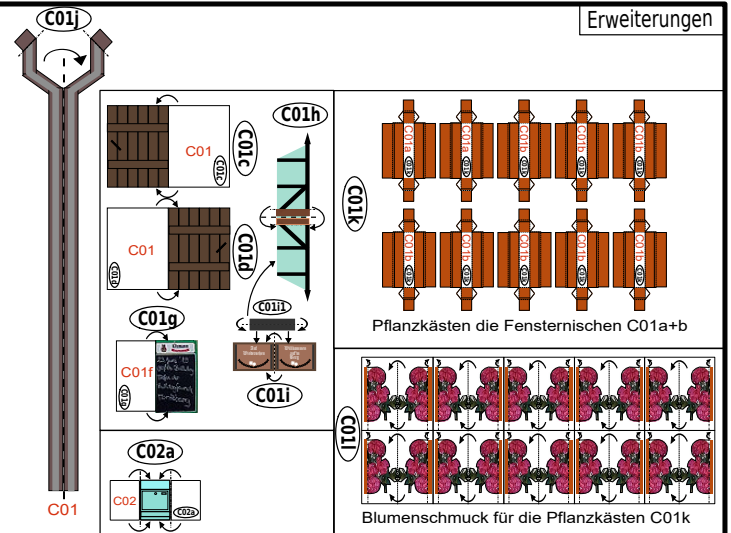
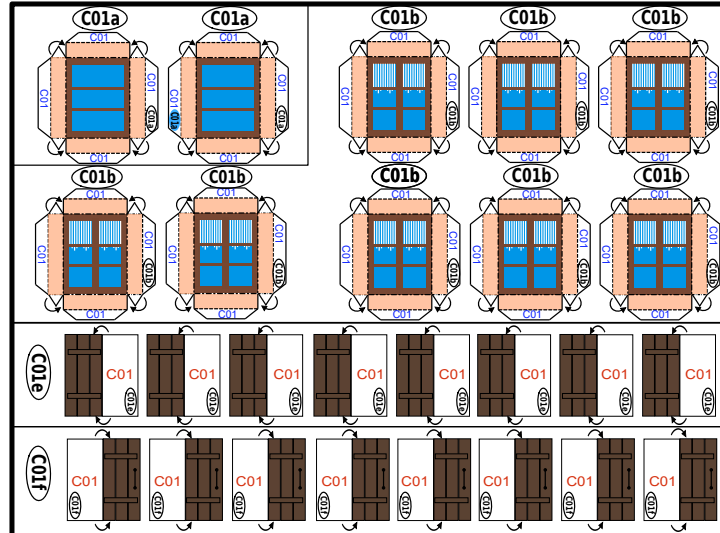


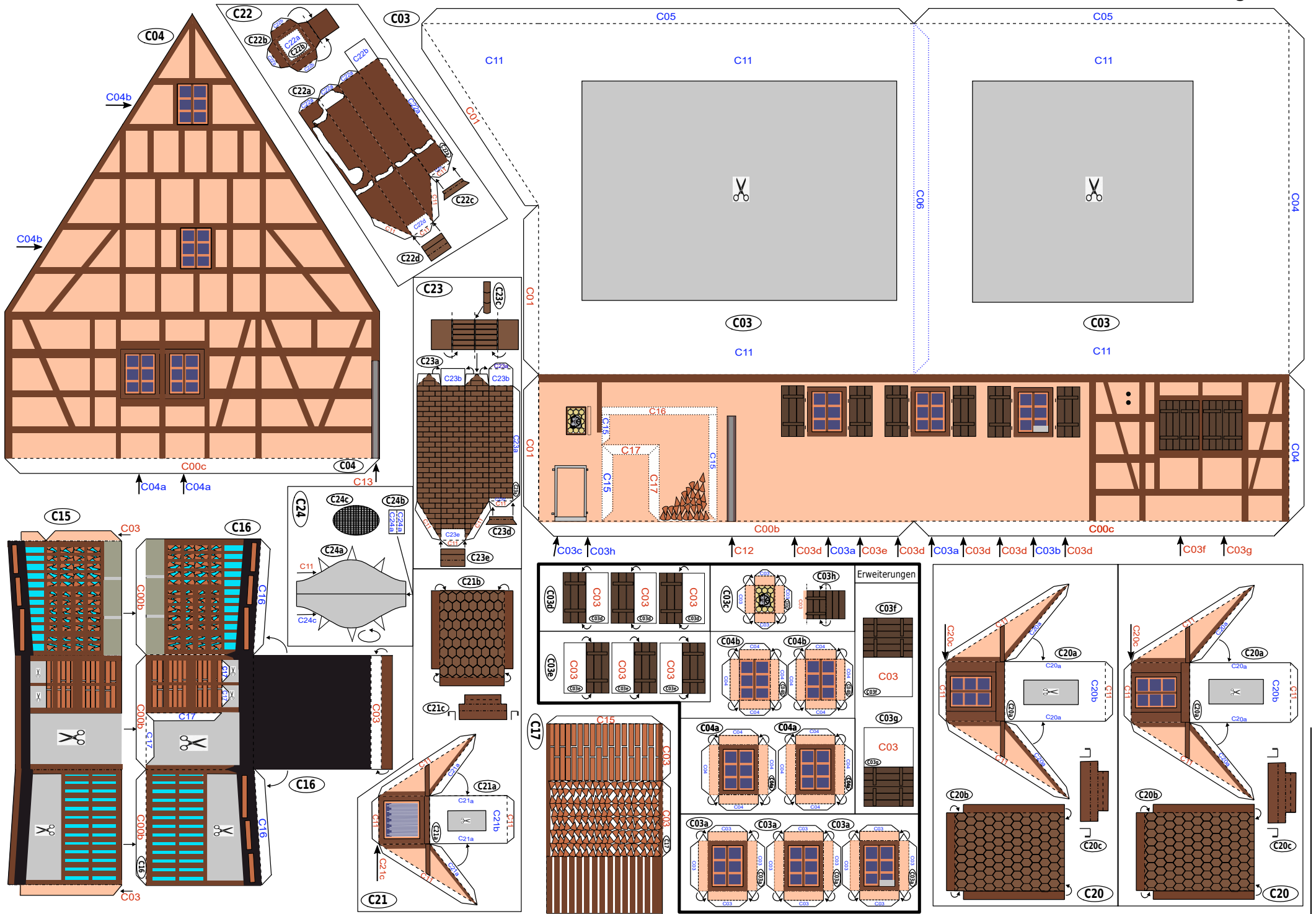


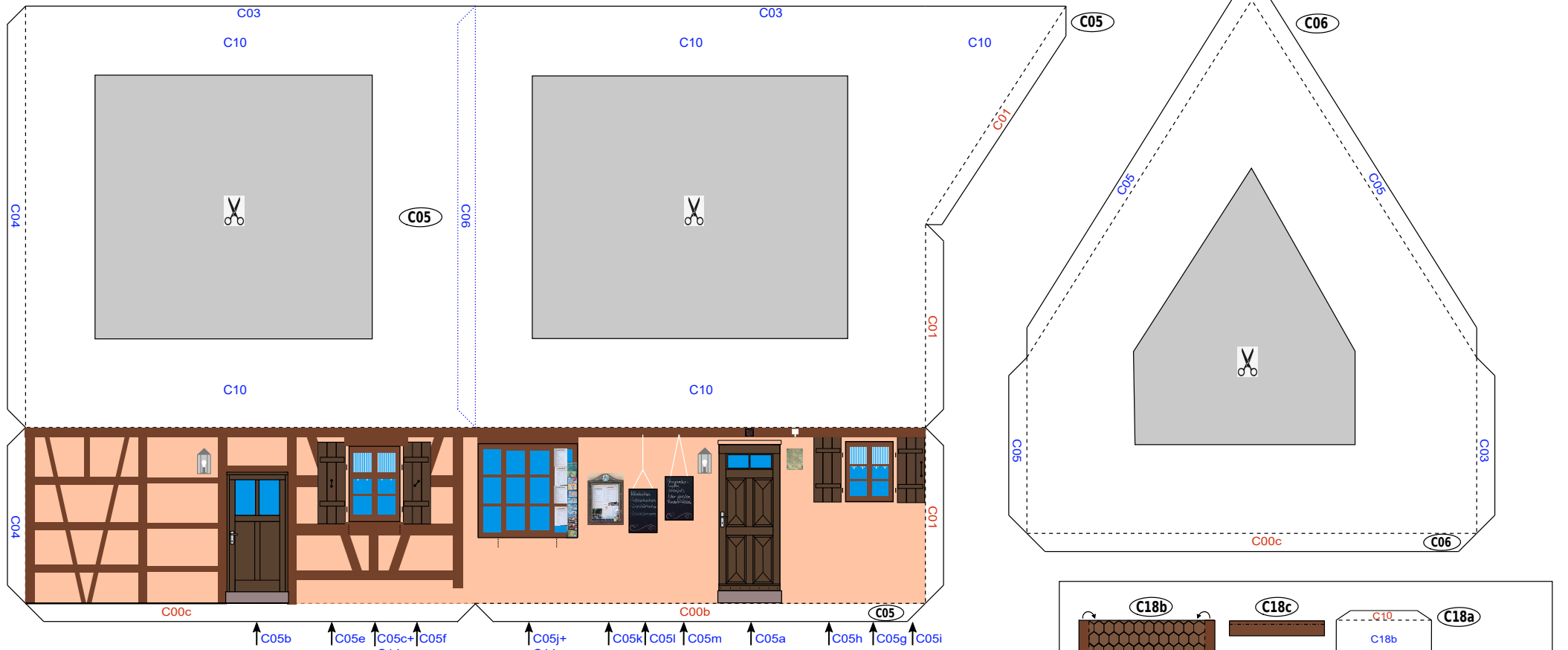


Oben: C01c | C01a | C01a | C01d | C01h+i | C01e | C01b | C01f | C01j | C01e | C01b | C01f

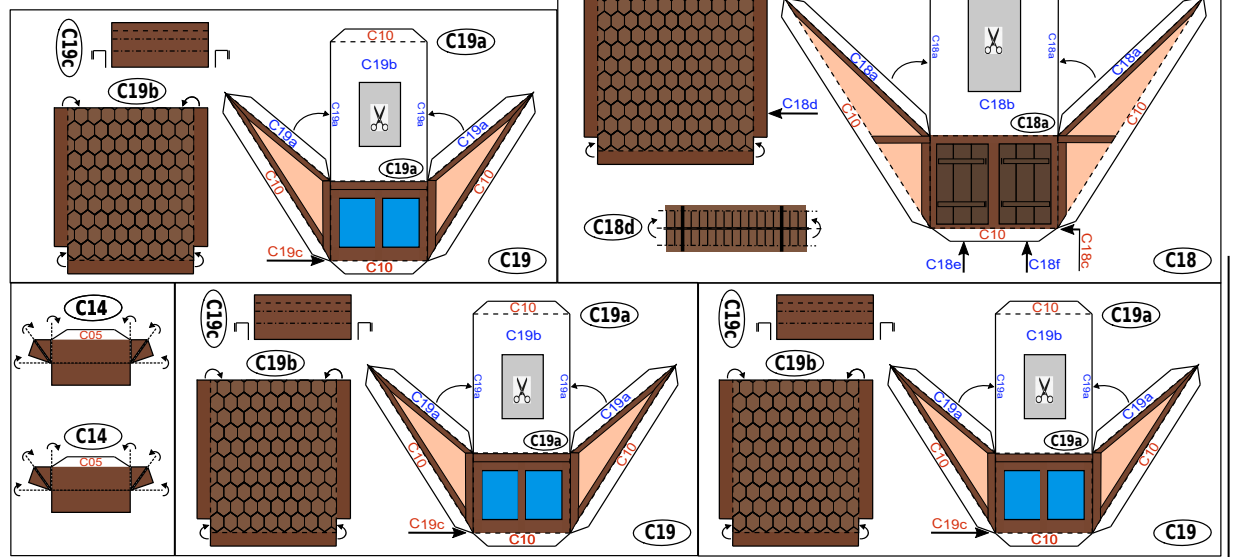
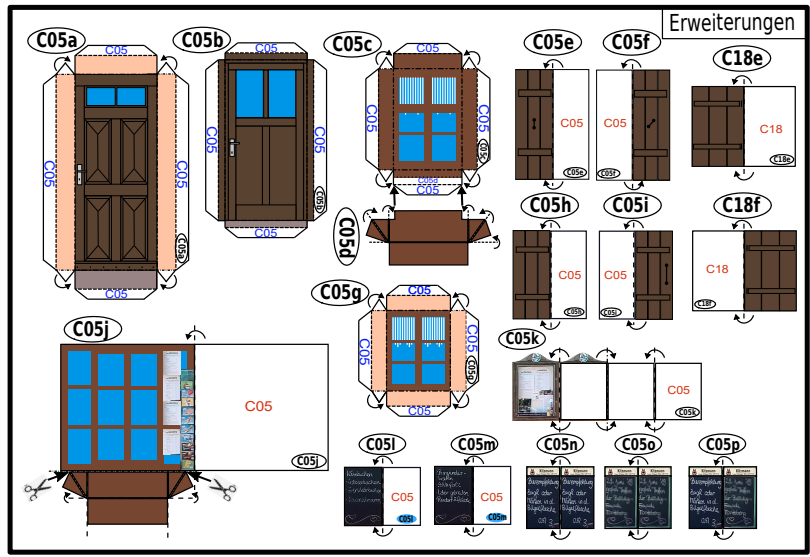
Unten: C01e | C01b | C01f | C01e | C01b | C01f | C01h+i | C01e | C01b | C01f+g | C01e | C01b | C01f

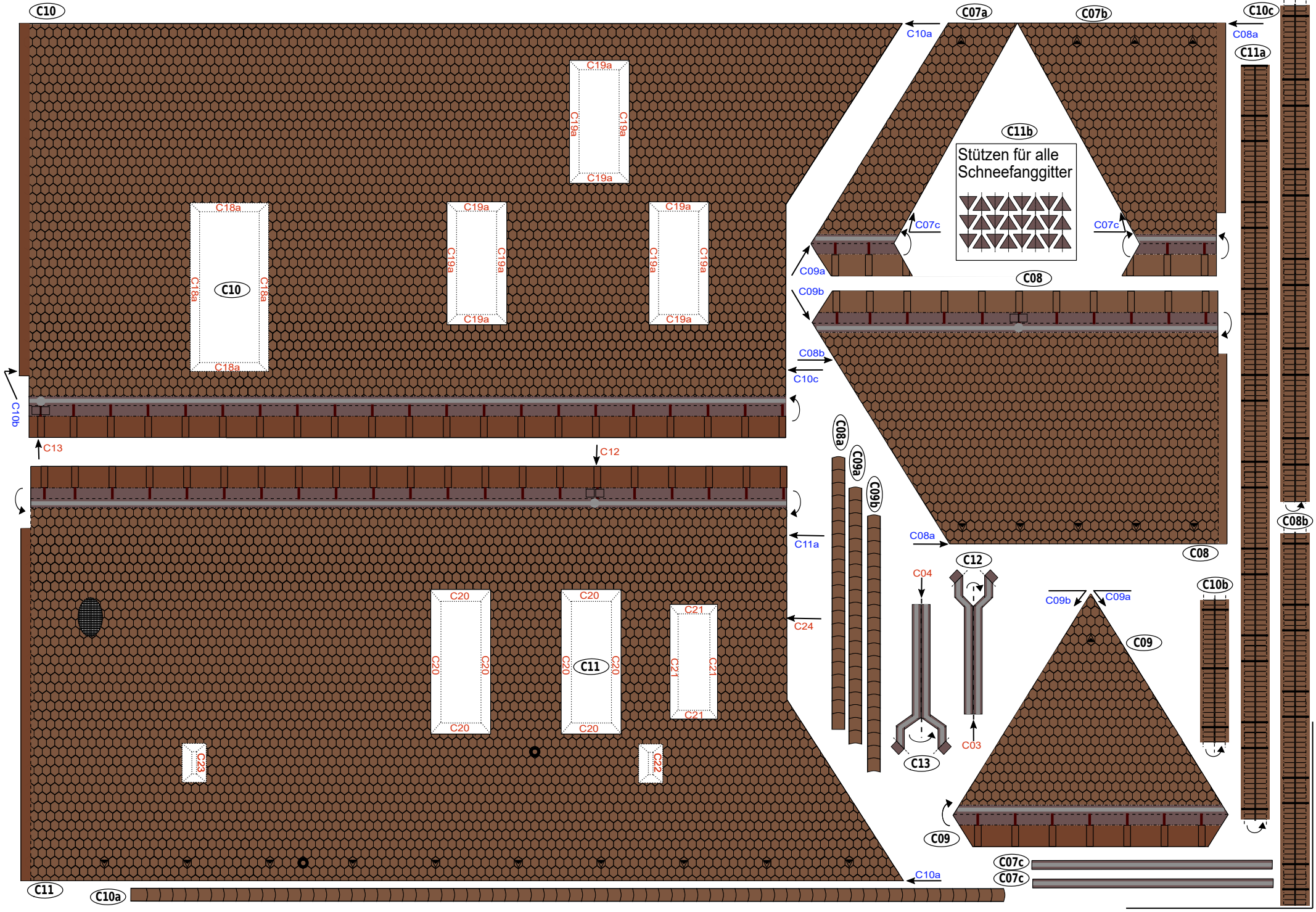




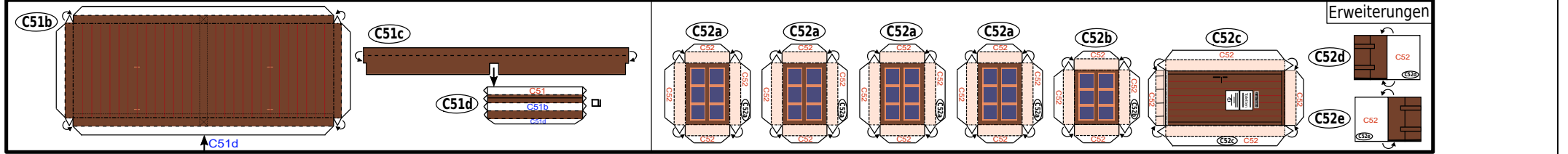
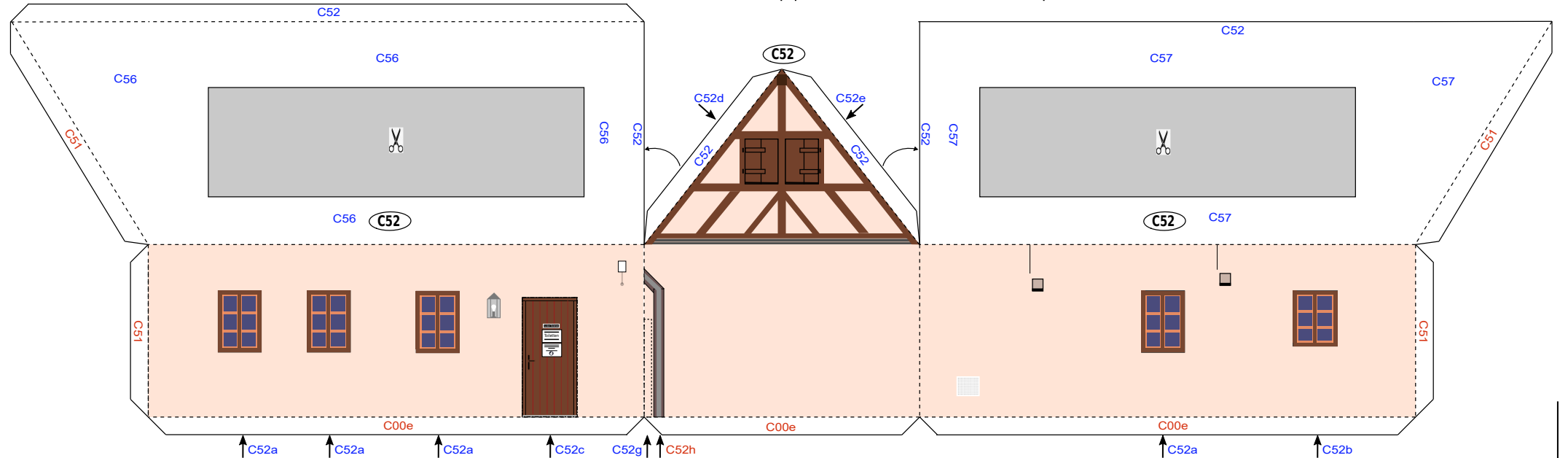
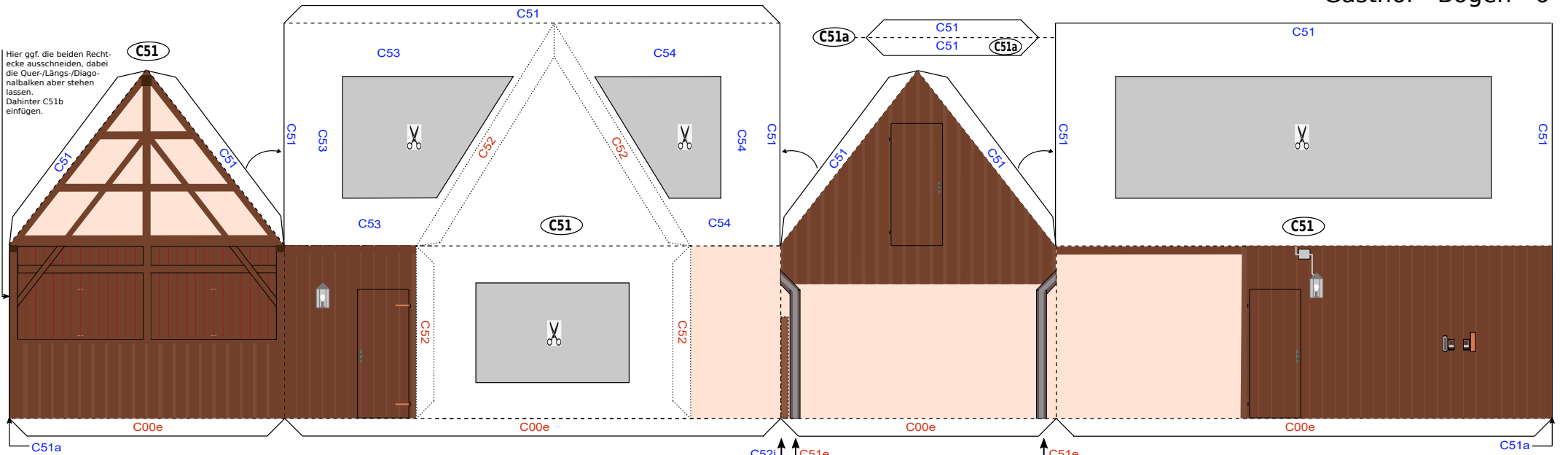


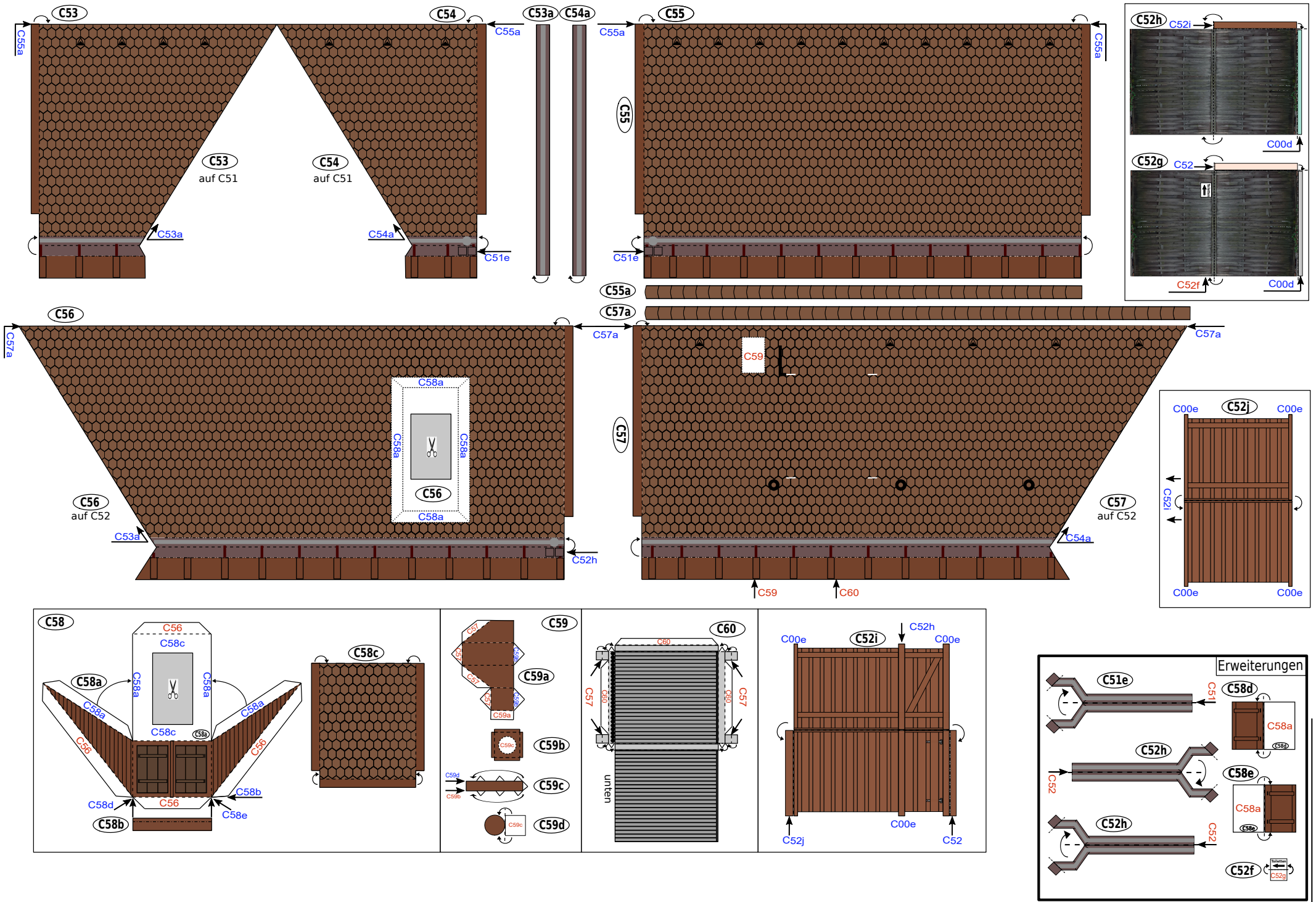
↑C05b ↑C05e | C05c+ | C05f | C14
 ↑C05j+ | C05k | C05l | C05m | C05a | ↑C05h | C05g | C05i



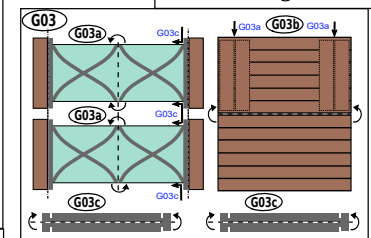
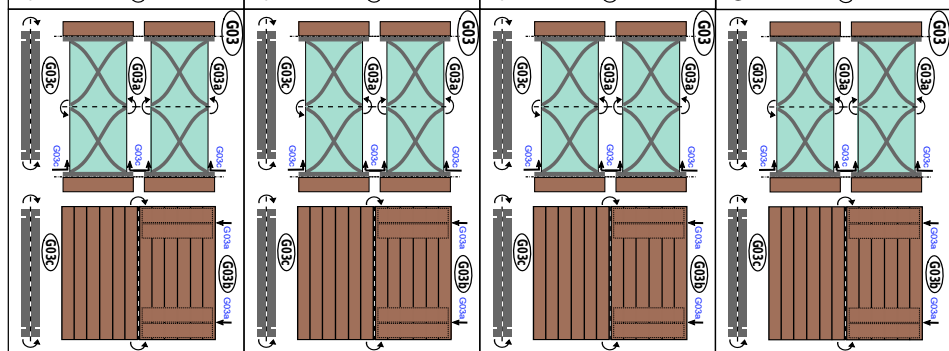
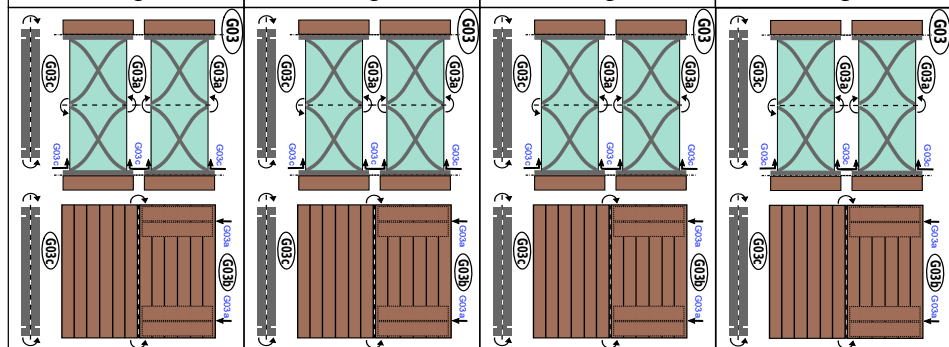
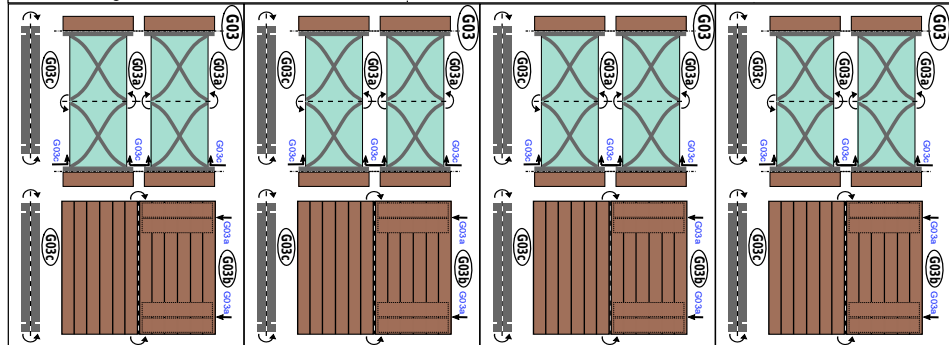
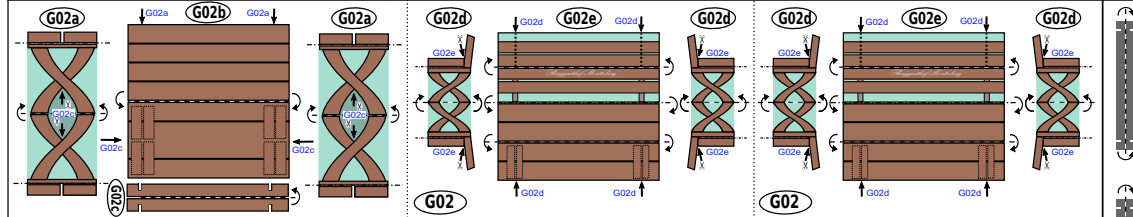
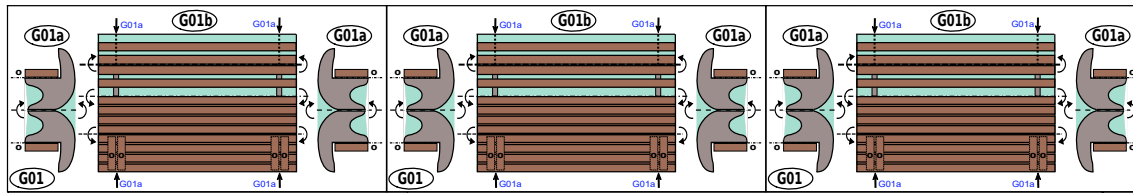


Hier ggf. die beiden Rechtecke ausschneiden, dabei die Quer-/Längs-/Diagonalbalken aber stehen lassen. Dahinter C51b einfügen.

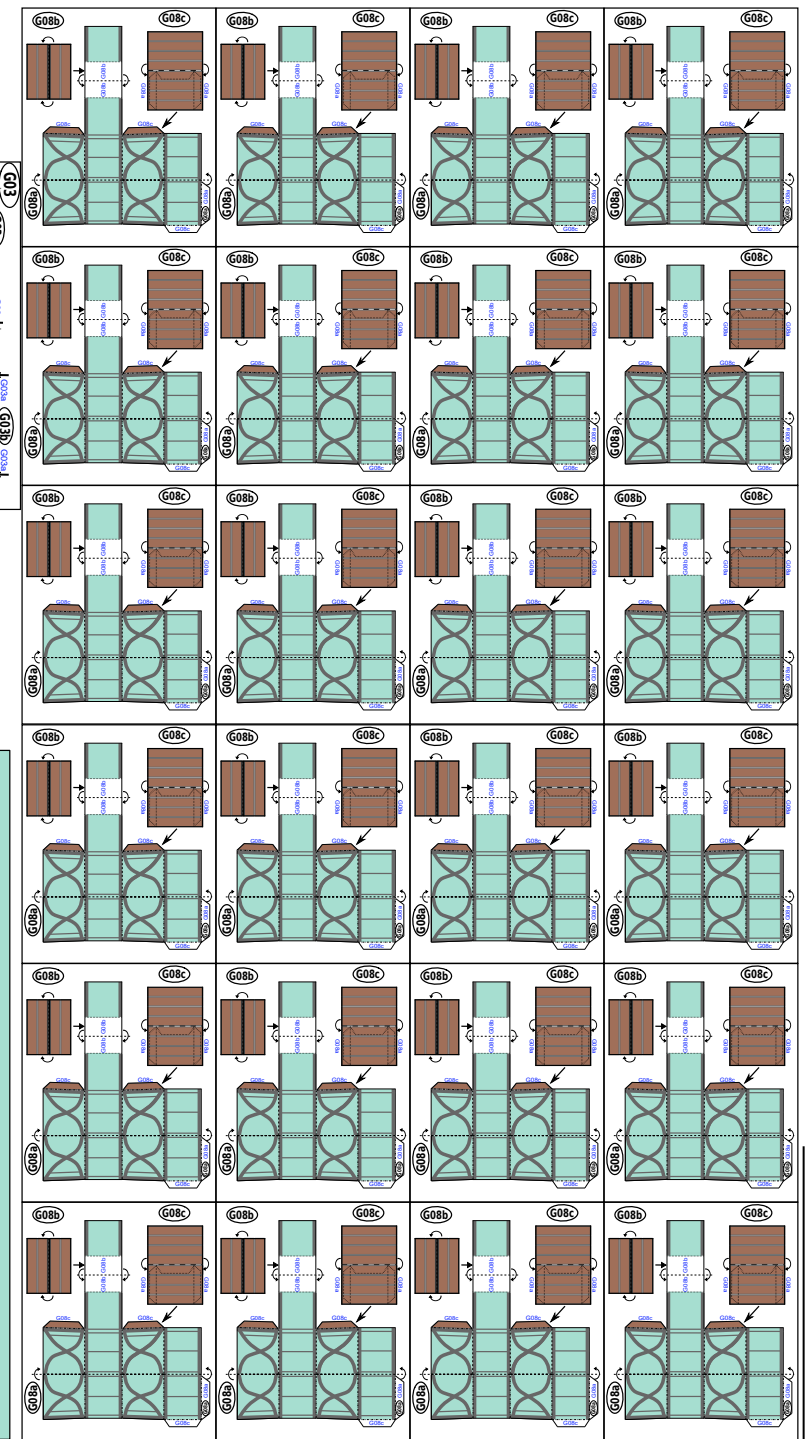


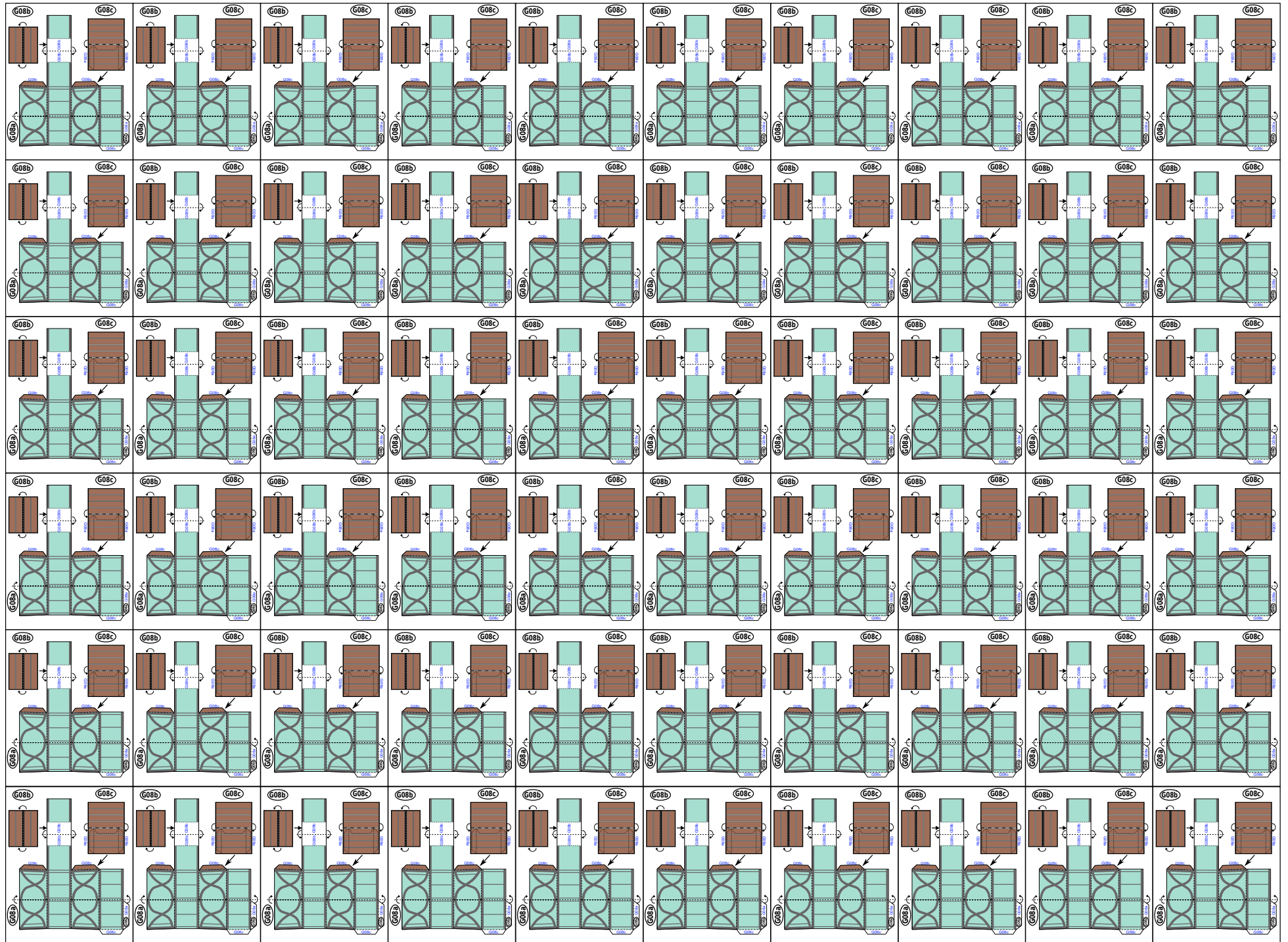


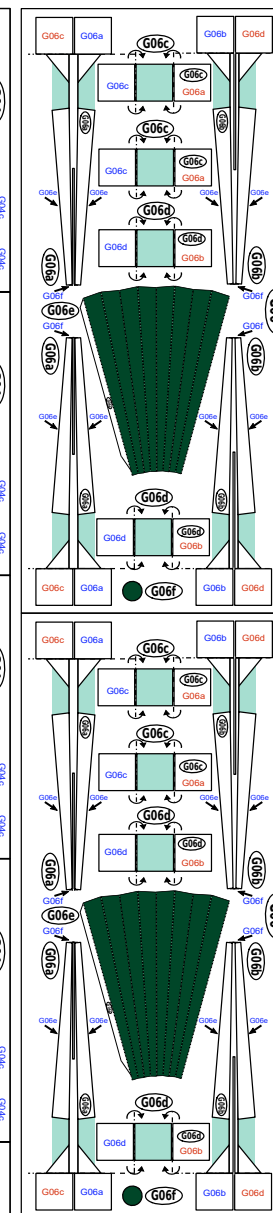
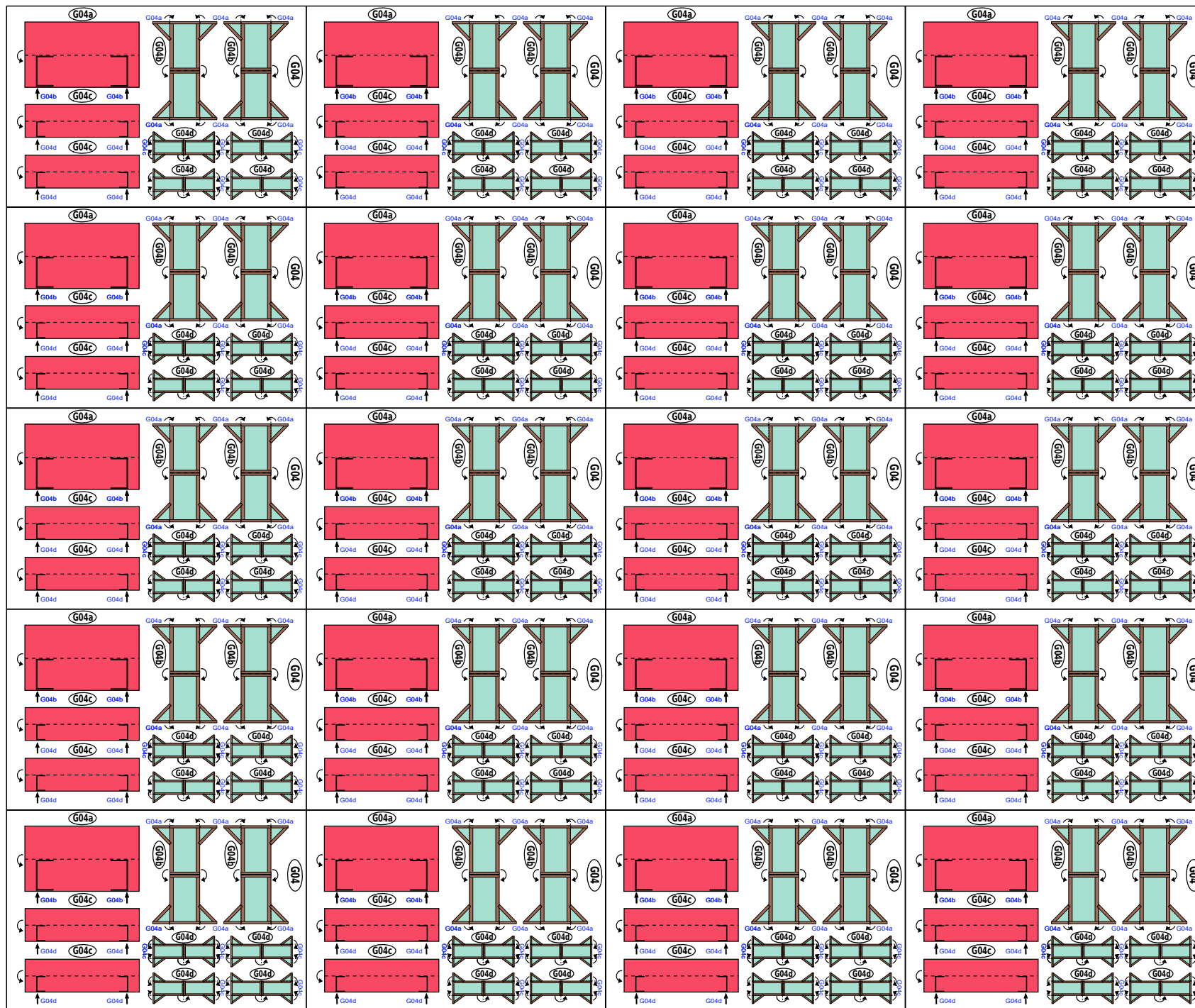


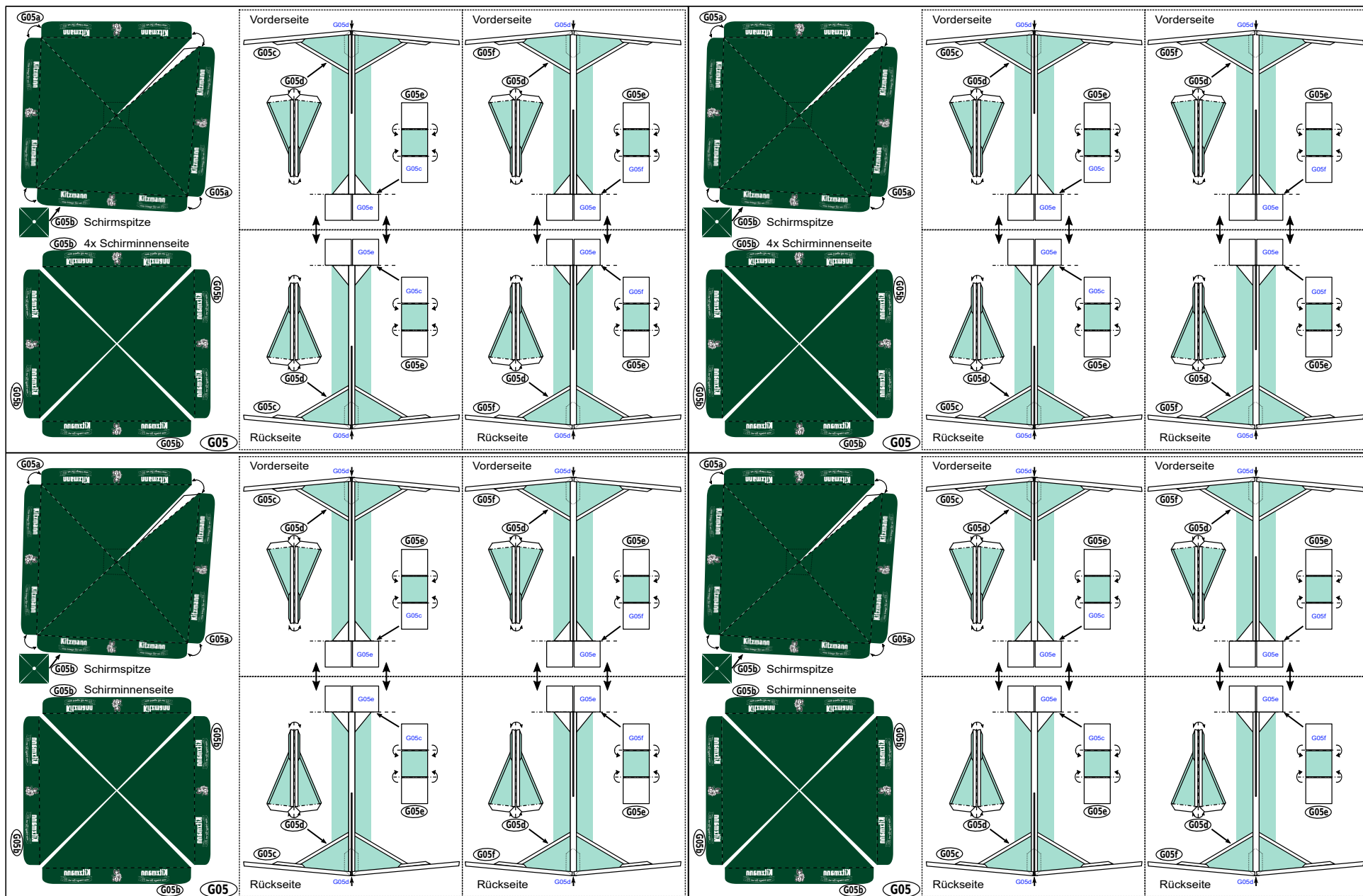


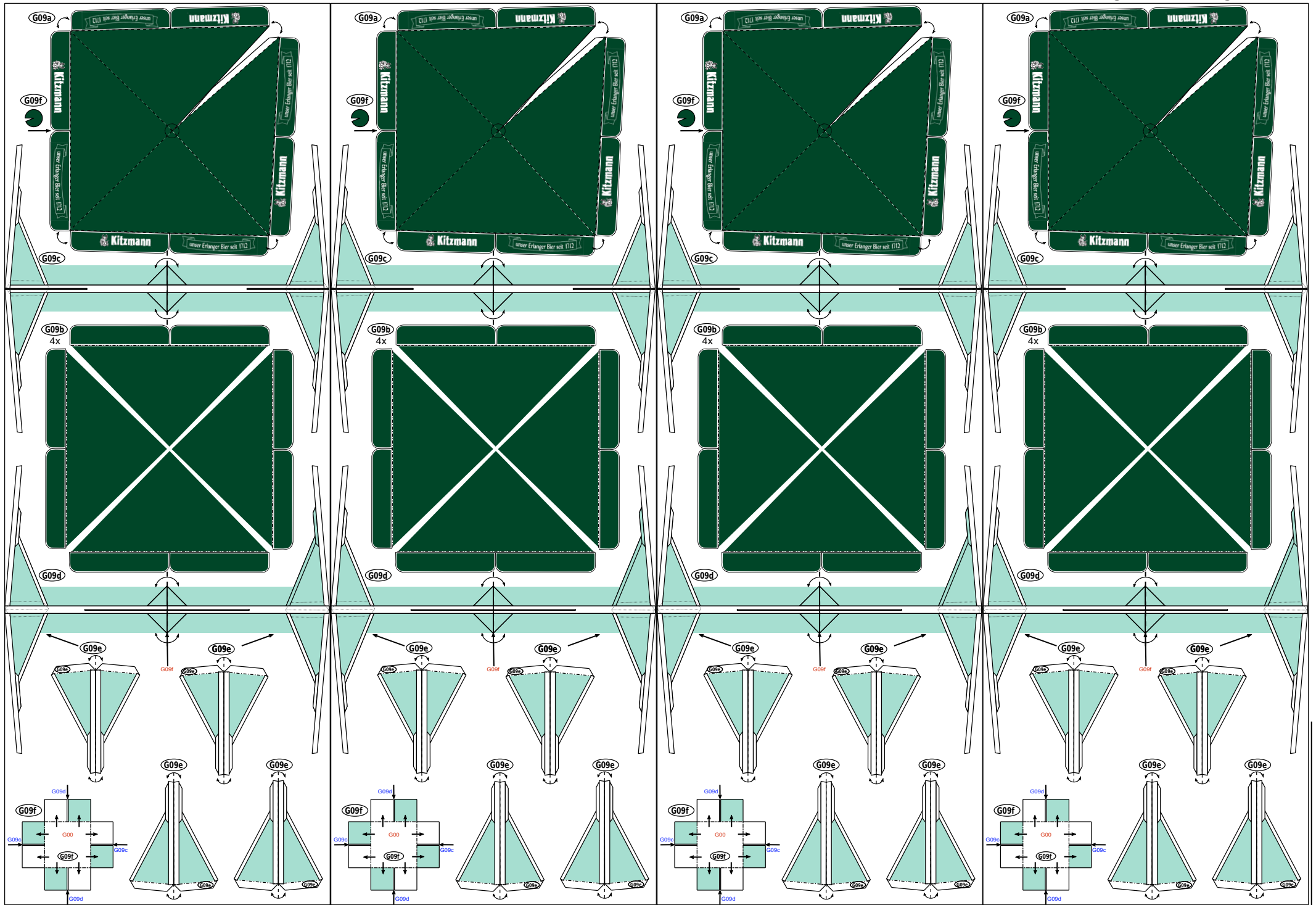
- G01 3 Sitzbänke am Turm
- G02 1 Stammtisch + 2 Bänke
- G03 14 Tische mit Stühlen G08
- G04 20 Biergarten (1T+2B)
- G05 4 Gartenschirme eckig mittel
- G06 2 Gartenschirme geklappt
- G07 4 Fahnen am Mast
- G08 84 Gartenstühle einfach
- G09 4 Gartenschirme eckig groß
- G10 4 Mountainbikes
- G11 1 Waschtrog für Blumen
- G12 1 Holzwand
- G13 3 Schilfmatten
- G14 1 Bühne mit Treppe
- G15 1 Herzstab
- G16 2 Aschen-/Abfallimer
- G17 2 hohe Aussenlampen
- G18 2 Blumentöpfe eckig Thuje
- G19 2 Blumentöpfe eckig Geranien
- G20 2 Blumentopf eckig blau
- G21 2 Blumentopf eckig weiß klein
- G22 1 Blumentopf Ton rund Thuje
- G23 1 Blumentopf Ton rund Geranien
- G24 1 Blumentopf Ton rund ohne
- G25 3 Holz-Blumentröge Thuje
- G26 1 Kühlschrank verrostet
- G27 1 Holzkiste mit Deckel
- G28 4 Wasserstellen für Hunde
- G29 2 Feuer-Fässer alt
- G30 2 Mülltonnen grau
- G31 3 Holzstämmе hoch Rinde
- G32 3 Holzstämmе klein Birke
- G33 4 Dreckabstreifer Schuhe
- G34 2 Geranien hängend Stab
- G35 1 kleine Lampen auf Holzbrett











This image is a detailed template sheet for a beer garden archway, titled "Biergarten - Bogen - 7". It contains numerous cut-out pieces and assembly diagrams, each labeled with a code. The components are organized into several main sections:

- Top Left:** Three identical rectangular panels labeled G13, each with a dashed vertical line and arrows indicating they are to be joined together. They are labeled C00a on the top and bottom edges.
- Top Middle:** A large rectangular frame labeled G14a, consisting of a central grey panel (G00) and a brown lattice border (G14). A pair of scissors icon is shown on the central panel.
- Top Right:** A series of components for the arch's top structure, including: two sets of vertical posts (G16a, G16b, G16c, G16d); two sets of decorative finials (G17); two sets of conical tree-like structures (G18b, G18c); and two sets of blue fabric-like panels (G20a, G20b).
- Middle Left:** Components for the arch's base and side panels, including: two sets of decorative finials (G15a, G15b); four sets of circular decorative elements (G28); two sets of decorative finials (G19a, G19b); two sets of white fabric-like panels (G21a); and a large brown textured panel (G26).
- Middle Right:** Components for the arch's side panels, including: two sets of curved orange panels (G22a, G22e, G23a, G23e); two sets of decorative finials (G24a, G24b); and two sets of decorative finials (G35a, G35b).
- Bottom Left:** Components for the arch's base and side panels, including: three sets of decorative finials (G25b, G25a); three sets of decorative finials (G33); and a large dark grey panel (G12).
- Bottom Middle:** Components for the arch's base and side panels, including: two sets of decorative finials (G30a, G30b); two sets of decorative finials (G29a, G29b); two sets of decorative finials (G27a, G27b); and four sets of decorative finials (G07a, G07b, G07c, G07d).
- Bottom Right:** Components for the arch's base and side panels, including: four sets of decorative finials (G32a, G32b, G32c, G32d); four sets of decorative finials (G10a, G10b, G10c, G10d); and four sets of decorative finials (G08b, G08c).